

District Advertiser

Southam Edition

April 2026

FEATURED

Down the Garden Path

Pg 12

FEATURED

Crossword & Sudoku

Pg 25, 29

FEATURED

Health & Wellbeing

Pg 20-21

FEATURED

Monthly Horoscope

Pg 10

The Ultimate Directory of Local Services for
Southam & Surrounding Villages | Est. 1994

www.districtadvertisers.co.uk



District Directory

Accounting/Bookkeeping/Tax Returns

Grineaux Accountants01926 814578
 Rebel Book-Keeping.....07464 455308

Care Homes

Royal British Legion, Galanos House
01926 812185

Carpets/Cleaning/Upholstery/Restoration

Cloudy2Clear.....0800 61 21 118
 Goode Clean Window Cleaners.....07731 649662
 Steaming Sam01926 889691
 Tithecrest Upholstery01926 813865
 Wright Flooring Installations01926 810340

Charities/Councils/Emergency

Age UK Warwickshire01926 458100
 Safer Neighbourhood Team01926 684984
 Southam Police.....01926 812366
 Stratford District Council01789 267575
 Southam Community Minibus.....01926 812767
 Southam Town Council01926 814004
 Southam Food Bank.....07745 244493
 Southam Community Minibus Association.....
 Royal British Legion Galanos Branch.....
07850 431127
 Warwickshire C.C.....01926 410410
 Warwickshire Vision Support.....01926 411331
 WRCC01789 842182
 WRCC Back & 4th Community Transport
01789 471595

Chimney Sweeps/ Logs/Fuel

GM Bostock & Sons01926 812319
 Soobusters01926 887195
 The Shires Sweep07816 337962

Churches

Catholic Church of Our Lady and Saint Wulstan
01926 812351
 St James Church.....01926 812413
 Southam Community Church01926 811144
 Southam & Bishops Itchington Congregational
 Church01926 812695

Dentist

Cedarlea Dental Care01926 817264
 Southam Dental01926 814527

Drives and Drop Kerbs

CJ & ND Wright01926 814541

Electricians

Intolec01926 768080

Food & Drink/Catering

Community Hub and Café.....
01926 812185 Ext: 5255
 D & E Trice (Harbury Milk Shed)07733 158680
 Phillipas Faerm Shops07903 398533
 Puddleduck Café & Gallery.....01926 919315

Gardening/Supplies/Services/Landscaping

ESL Midlands Ltd.....07792 192664
 Gullivers Tree Solutions Ltd.....07894 789667
 Iains Gardening Services.....07799 107867
 Jack Cooper / Turf.....01926 613134
 S & M Fencing and Landscaping Ltd
07703 397568
 S Taylor Services.....07494 369630
 Scullion Tree Care07776 694373
 Shire Forestry.....07584 132926
 Tom Rodgers - Tree Services.....01926 710383
 Warwick Buildings.....01926815757

Garden Centre

Farnborough Garden Centre.....01295 690479

Health/Fashion

Fitness Worx.....01926 258210
 Health First.....01926 811272
 Heavenly Feet07427 470871
 Jewel of Southam01926 717172
 Patt Stock/Bowen.....01926 811140

Builders/Estate Agents/Home Improvements

A J Block Paving Contractors Ltd.....01926 815717
 Accent Lighting.....01327 703123
 APT Design Services.....01926 259216
 Browns The Roofing Company0333 202 7102
 Ewe Move.....01926 800555
 Fitrite Wardrobes Leamington Ltd...01926 312654
 Gutter Vacuuming.....07545 760382
 Greenlight Interiors.....01926 930698
 Greenlight Windows & Doors.....01926 930698
 HR Estate Agents.....07908 742242
 J P Collins Builders.....07831 704075
 Nook Kitchens & Bathrooms.....07521 963635
 N T Pointing Services Ltd.....07866 566286
 P & B Carpentry & Builders.....01926 612399
 Southam Windows Ltd01926 811866
 Superior Roofing Solutions Ltd01327 261728
 The Property Experts.....01926 814713
 W Goodwin & Sons01926 812445
 W L Property Repairs.....07502 451970

Hospitals

Warwick /South Warwickshire NHS Foundation
 Trust01926 495321
 Coventry/University Hospital02476 964000
 Rugby/Hospital of St Cross01788 572831
 Stratford Hospital01789 205831
 Oxford/John Radcliffe Hospital0300 304 7777

Leisure/Entertainment/Photography

Biopic Photography.....07425177527
 Community Hub & Café 01926 812185 Ext. 5365
 Graham Adams Centre.....01926 811519
 Harbury Com. Library & Café.....01926 258776
 Irwin's Collectibles01926 632230
 Royal Spa Centre Box Office.....01926 334418
 Southam Library0300 555 8171
 Southam Stompers07765 204927
 Southam & Harbury Bouncy Castles
01926 815467
 The Grange Hall.....01926 813933

Locksmith

Chris Berry & Sons.....07944 243566

Motor Services/Repairs

John King & Son01926 817443/812976
 Southam Bodies01926 813676

Painting/Decorating/Interior Design

Harry Timmis07814 430125

Pest Control

Pest Force Warwickshire.....07852 878007

Pharmacies

Southam Pharmacy01926 812287

Plumbers/ Drainage / Gas Services

C H Plumbing & Heating.....07712 211427
 Plumbing and Heating Leamington Spa.....
07305 820920

Post Office

Southam Post Office.....01926 817532

Printing / Design

Salvo Design & Print01926 429111
 Southam District Advertiser.....01926 811911

Removal/Clearance/Courier/Storage

R & K House Clearance.....01295 770808
 Watson Self Storage.....01926 812433

Schools/Colleges/ Nurseries/ Tuition

Abacus Pre-school Nursery.....01295 771050
 Beechwood Child Care.....01926 815155
 Beehive Day Nurseries Ltd01926 811551
 Bizzy Tots01926 817827
 Boddington C.E.....01327 260120
 Bright Horizons01926 811551
 Dassett CE. Primary01295 770267
 Harbury Primary.....01926 612656
 Harbury Pre-School.....07907 598461
 Harbury School Kids Club.....01926 613740
 Leam.Hastings CE Academy01926 632359

L/Itchington CE Academy.....01926 814819
 L/Itchington Pre-School01926 811400
 Priors School01327 260527
 Southam Primary School01926 812520
 Southam Primary Pre School01926 811022
 Southam Outreach01926 691105
 Southam College.....01926 812560
 Sou. Col. Community Ed01926 810942
 Space Studio Banbury.....01295 257942
 St James CE Academy01926 812127
 St Lawrence/Little Lawrence01926 812447
 St Mary's Catholic Primary01926 812512
 St. Mary's Children's Club.....01926 812969
 Stockton Primary01926 812483
 Stockton Stepping Stones.....01926 813789
 The Grange Pre-School07742 903439
 The Kingsley School.....01926 425127
 The Priors School01327 260527
 Warks College0800 7836767
 Windmills Nursery School.....01926 614564

Solicitors/ Wills/ Advice

Brindley, Twist, Tafft & James01926 217555
 Keith Harvey & Company01926 814018
 Lions General Enquiries01926 814294
 Moore & Tibbits Solicitors01926 354704
 Rotary Club Southam 2000.....01926 815831
 Southam Christmas Lights01926 817744
 Stratford & South Warwickshire Liberal Democrats
01789 295970
 Travel Counsellors.....01926 29140

Taxis

Five Star Cars.....01926 812666
 Steve's Car07891 075955



Free Quotations!




Window Cleaning
Roof Moss Removal
Conservatory Roofs
Gutters Cleaned Out
Gutters & Fascias Cleaned
Jetwashing & Solar Panels

Mob: **07731649662** Email: **goode.clean@hotmail.co.uk**

QUALITY

RE-UPHOLSTERY

TITHECREST

Domestic

& Commercial

Antiques - Modern

(01926) 813865

Disclaimer: All adverts are printed in good faith, however, the District Advertisers cannot take responsibility for the contents of the advert or the services provided by the advertiser. Adverts created by District Advertisers are copyright protected and are not to be copied or used in any other publication without permission.



FOX CUBS RSPCA

Baby foxes may look cute and cuddly but they're wild animals with a fierce bite! They're incredibly smart and have a keen sense of sight, hearing, and smell.

How do fox cubs survive?

Fox cubs are born in the spring and there are usually four to five cubs in each litter.

Here's a year in the life of a fox:

Winter - foxes start to establish and defend their territories, ready for the mating season in January. This is often when they're most vocal and people report hearing them screaming.

Spring - fox cubs are born and start to emerge from their den.

Summer - the cubs will grow and become independent, while the adults leave the den and start to moult. It can take several months for their new coats to completely grow back.

Autumn - now the cubs are fully grown they'll leave their family group to find territories of their own.

Fox cub development

Fox cubs are born blind and deaf, weighing about 100g and their fur is dark grey. This changes to a dark brown in the first two weeks as their ears and blue eyes open.

At one-month-old, their red fur starts to come through on their face and their eyes change colour to amber. As they start to take their first steps outside of the den their muzzle turns white.

By six to eight weeks their dark fur fades to red and are weaned from their mother. They're starting to become independent and spending time exploring outside the den.

Rescuing a fox cub

If you find a baby fox, it might not have been abandoned. In the spring, it's normal to see month-old cubs developing their survival skills above ground during the day. Their parents are usually nearby, watching. Parent foxes are unlikely to approach the cubs if people are around. Vixens will move their litter one by one if they feel the den has been disturbed and so you may come across cubs then.

Is the fox cub in danger?

If it's unclear if the cub is in immediate danger or not, watch and wait for an hour or two. They may recover and wander off. After that time, if it's clear that they need help, contact us on 0300 1234 999.

If its eyes are open - parents are probably nearby so just check again in 24 and 48 hours, and provide supplementary food/water if concerned.

If its eyes are shut - the cub is dependent on their mother and too young to be above ground. Don't confine it, as it might be possible for an expert to reunite it with mum.

Don't try to rescue, handle or transport the cub yourself as they can be aggressive when stressed or injured.

Because cruelty and neglect calls are our top priority, it might take us longer than we'd like to help this cub. We appreciate your understanding.

Never try to rear a cub yourself

Fox cubs need expert care and the company of other fox cubs. Foxes that grow up around humans and become used to them won't survive well in the wild. It's usually better for cubs to be left in the wild and given supplementary food and water than to be brought into captivity. Their average stay in a wildlife centre is five to six months, which is a long time in a young fox's life.

If you've been asked to take a fox cub to a vet or wildlife rehabilitator, record the exact location you rescued the cub from in case they can be returned.

If you disturb a fox litter and the mother runs away, move away from the cubs and monitor them from a distance. Their mother should return when she feels safe and will move her cubs to another den.

Philipppas

CONTACT - 07903-398533
FACEBOOK - PHILIPPA'S
INSTAGRAM - PHILIPPAS.FARMSHOP

Event catering

FUNERALS, BUFFETS,
CORPORATE EVENTS,
PARTIES AND MORE!

WE CATER A RANGE OF EVENTS
FROM 2 TO 200+, WITH FOOD,
TEAS AND COFFEES ALL
SERVED ON CHINA.

Farm Shops

7 CRAVEN LANE,
SOUTHAM,
CV47 1UU


32A, HIGH STREET,
BUGBROOKE,
NN7 3PA

YOUR LOCAL FARMSHOPS,
SELLING A RANGE OF MEAT,
BREAD, VEG, COFFEES,
CAKES AND SO MUCH MORE!

OPEN TUESDAY THROUGH
TO FRIDAY 8AM-5PM AND
SATURDAYS 8AM-1PM

ED SMYTH LANDSCAPES

SPECIALISTS IN ALL ASPECTS OF
LANDSCAPING • PAVING
DECKING • TURFING
PLANTING • PERGOLAS



SOUTHAM AND SURROUNDING VILLAGES
Harbury • Deppers Bridge • Long Itchington
Napton and more

07792 192664

www.edsmythlandscapes.com

Dear Reader

Welcome to our April edition, as spring begins to settle in and the days grow lighter, brighter and full of promise. It is a lovely time of year to look ahead, get out into the community and enjoy all that our local area has to offer.

In this month's issue, we bring you another varied mix of features, ideas and information to keep, enjoy and share. You will find our April Horoscopes for all star signs, with special focus on Aries and Taurus as the month moves from one sign into the next. We also include our latest PC Doctor feature, looking at how to identify common scams, the warning signs to watch for, the things you should never do, and the immediate steps to take if you think you may have been caught out.

Alongside these, you can enjoy our regular community-focused content, local news, events, notices, features, and updates from advertisers and organisations across the district. As always, we hope the magazine remains a useful and trusted guide for what is happening locally, whether you are looking for services, events, inspiration or simply a good read with a cup of tea.

Thank you to all our readers, contributors and advertisers for your continued support. We are proud to bring this magazine to you each month and hope this April edition informs, reassures and entertains in equal measure.

Wishing you a happy and hopeful April.

District Advertiser Team

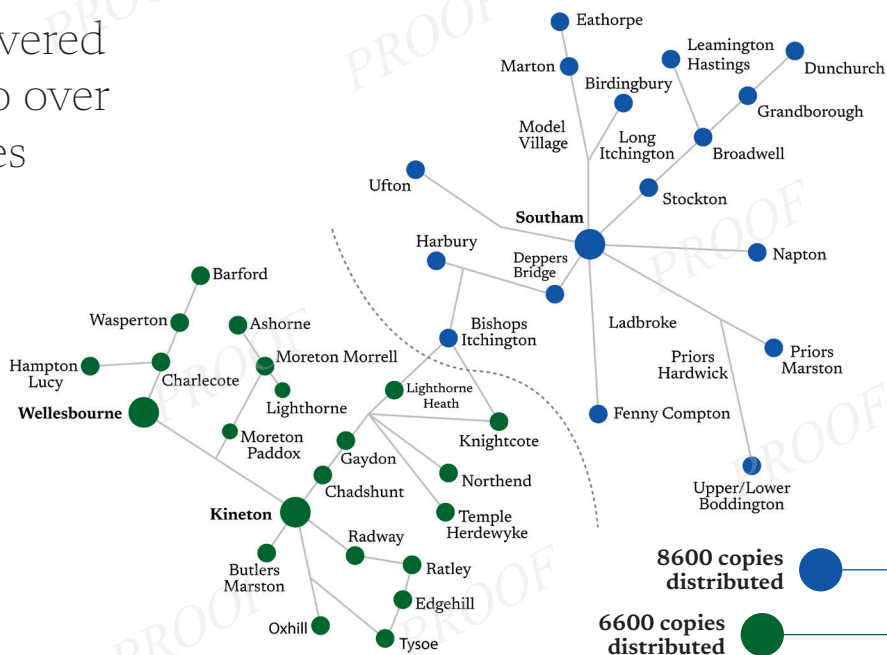
S O L			V E D					
4	9	5	6	1	7	8	2	3
8	6	3	5	2	9	4	1	7
7	1	2	4	3	8	6	5	9
5	8	7	1	6	2	9	3	4
2	4	1	7	9	3	5	6	8
6	3	9	8	5	4	2	7	1
3	7	6	9	4	5	1	8	2
9	5	8	2	7	1	3	4	6
1	2	4	3	8	6	7	9	5

District Advertisers are delivered monthly **FREE** of charge to over **15,000** homes & businesses

Deadlines for our May Issues:

Southam
18th April 2025

Kineton & Wellesbourne
18th April 2025



Owner: Peter Crosby
Graphic Designer: Jude Irons
Illustrations: Freepik.com
Cover Photo: Ed Van Duijn

Adverts can be created from basic information provided all within the cost of your advertising. Leaflets and flyers can be distributed with the Advertisers to specific areas.

© Copyright protected 2025 | All adverts and artwork created by the District Advertisers or Stare Design and Print are not to be reproduced, copied, duplicated or used in any other publication without prior permission of the District Advertisers.

Gulliver's Tree Solutions Ltd

Byfield, Northamptonshire
All Types of Tree Work & Groundcare

Crown Reductions, Complete Removal,
Pollarding, Grass Cutting & Ground care,
Tree Planting, Stump Grinding,
Hedge Work, TPO & CA Work,
Kiln Dried and Barn Dried Firewood

Fully Insured, Emergency Call Out

Telephone: **07894 789667**

Email: **tim@gulliverstreesolutions.com**



PLANNING PERMISSION

We have a 97%* success rate with obtaining planning permission over 9 districts and borough councils

*at time of print and including active appeals



ARCHITECTURAL DESIGN

APT Design Services will work with you and take your initial ideas from concept to completion



BUILDING CONTROL

We can produce all necessary drawings, schedules and information to enable your build to achieve or out perform current building regulations

- Architectural Design Ideas & Advice
- Drawings for New Build Homes, Extensions & Conversions
- Conservation & Listed Building Advice
- Planning Applications
- Building Regulation Applications (Including Full Construction Drawing Packages)

APT Design Services offer a free no obligation initial site visit to better understand your requirements and offer early design advice.

www.aptdesignservices.co.uk

01926 259216

Brewsters Corner, Pendicke Street, Southam, Warwickshire CV47 1PN

TAXI SERVICE

Five Star Cars

Operators in Southam & surrounding Villages

Local and Long Distance Trips Welcome

Airport Transfers Sea Ports Race Days

Seaside Day Trips Parties

4- 6 Seater Vehicles Available / Also 8 Seater Minibus

01926 81 26 66

01926 81 74 79

Courier Service Available
Debit and Credit Card Payment Taken



VISIT THE BEAUTIFUL EAST DEVON JURASSIC COAST

Stay in a beautiful 3 Bed restoration in the centre of the historic town of Axminster. Ideally situated to use as a base to explore the World Heritage Jurassic Coast line and beautiful countryside

- Central Axminster location with parking
- 3 bedrooms, sleeps 6 people
- 10 minutes from Lyme Regis
- Pet friendly



Call Peter: 07779722951
Email: pcrosby@dasurf.net
www.starrecottages.co.uk

**FROM £350 FOR
A 3 NIGHT STAY**

Jewel of Southam

An exciting new Jewellers opening in June in Southam

Stunning silver, fashion & fine gold designs in store



JEWEL specialises in all jewellery repairs

Tel: 01926 717172

info@jewelonthenet.co.uk

CARDALL'S CORNER

April 2026

Transported for their Crimes (part 1)

By Dr Roland Raffell

The transportation of criminals dates back to 1601, when they were first sent to the British colonies in America and the Caribbean islands; however, once the USA had become an independent nation from Britain in 1776 after the American War of Independence, felons could no longer be sent there.

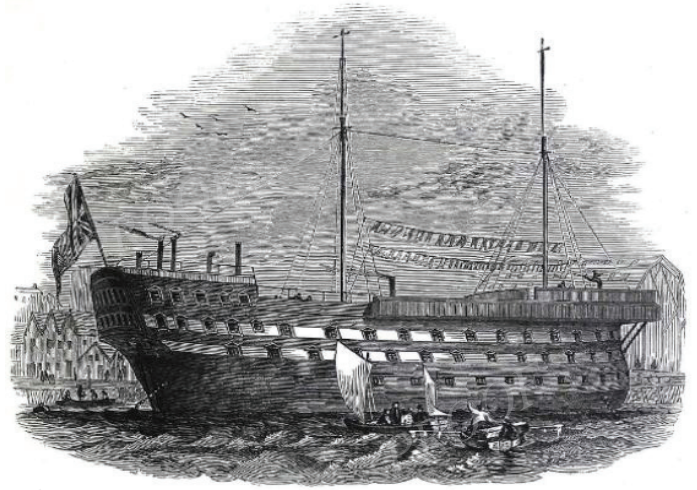
There is evidence of criminals being transported from Warwickshire recorded as early as 1767 when a 'transportation bond' was made between John Beardsley, the Clerk of the Peace for Warwickshire and three Bristol merchants, Samuel Sedgely, William Hillhouse and William Randolph, who agreed to transport Thomas Munger, a sheep thief, John Powell, thief of a gold watch, John Chambers, house thief, John Cherrington, thief and Mary Snape, condemned for 'stealing wearing apparel', with a contract worth £500. It is probable that the convicts would have travelled from Bristol to Maryland, where they would have been sold as slaves to work on tobacco plantations along with thousands of enslaved Africans.

As prisoners could no longer be sent to America after 1776, once Captain James Cook claimed Australia as a colony of Britain in 1770, criminals began to be sent there as forced labour. Transportation was seen as a suitable punishment as hanging became regarded as too extreme and the cost of prisons was seen as very expensive. There was the use of 'hulks' – old warships anchored on the River Thames – but these generally became overcrowded and rife with diseases such as typhus. Finally, many felt that sending prisoners away and forcing them to work could provide them with new skills and the chance to reform themselves.

Southam Heritage Collection

is located in the atrium of Tithes Place opposite the Library. Opening times Tuesday, Thursday, Friday and Saturday mornings from 10am to 12 noon.

To find out more about Southam's history, visit www.southamheritage.org telephone 07710 012052 or email: southamheritage@hotmail.com ~ You can also follow us on Facebook.



The Warrior, a Convict Hulk at Woolwich on the Thames, 1846. Picryl image.

Perhaps the most famous historical example of transportation relates to the Tolpuddle Martyrs, six agricultural labourers from Dorset who in 1834 were convicted for swearing an oath as members of the 'Friendly Society of Agricultural Labourers', which at the time contravened the Unlawful Oaths Act, during a dispute over the cutting of wages. They were eventually pardoned and allowed to return to England between 1837 and 1839.

In Southam, the first recorded example of such punishments occurred in 1829 and related to Robert Williams (alias White), aged forty-two:

'...having feloniously stolen at Southam on March 27, two pairs of shoes the property of Henry Lilley Smith and one shawl the property of his servant....sentenced to seven years transportation...'

On 6 October 1837, the magistrates at Southam's Quarter Session passed a guilty judgement upon John Reading, aged thirty-seven, who during an altercation:

"Always get your flooring Wright"

WF WRIGHT FLOORING INSTALLATIONS

Carpet | Sisal | LVT | Laminate | Vinyl

With 30 years of flooring experience, give Gary Wright a call today for your FREE home selection, consultation & quotation

01926 810340 | 07861 974148 | 07456 519766

wrightflooring855@yahoo.com

www.wrightflooring.co.uk



CARPET A ROOM FROM

£250 fitted!

3m x 4m room

to include:

CARPET

UNDERLAY

GRIPPER

DOOR BAR

CALL NOW FOR MORE DETAILS



JOHN KING & SON

The Folly Lane, Napton. CV47 8NZ
Tel: 01926 817443/813799
Mob: 07852 882878
Email: tjkjohnkings@tiscali.co.uk

Specialists in
CAR REFINISHING & BODYWORK
ACCIDENT INSURANCE REPAIR
PAINT SPRAYING | RESTORATION | MOTORCYCLES | CARAVANS
ALL TYPES OF PAINTWORK | PRIVATE WORK | WELDING
COLLECTION & DELIVERY SERVICE AVAILABLE



STARRE
DESIGN & PRINT

Business Cards • Brochures
Leaflets & Flyers • Promotional etc....
Merchandise

Call: 01926 811911 | Email: peter@starre.co.uk



'...in the parish of Southam unlawfully and maliciously stabbed Thomas Foster just below the pit of the stomach and also in his right thigh with the intention of grievous bodily harm...sentenced to transportation for life...'

A similar fate awaited many others in the villages around Southam, including Richard Cashmore, aged twenty-eight, of Long Itchington, who in 1829 was transported for theft and sentenced for seven years, while in 1837 a much harsher sentence was handed to James Smith, aged twenty-eight of Harbury, who was transported for life for stealing a sheep. *(To be continued next month)*

S & M FENCING
AND LANDSCAPING LTD



- Fencing
- Decking
- Pergolas
- Sheds
- Patios & Turf Laid
- Seasonal Cut Backs & Hedge Cutting
- Plus much more



All Erected at
The Right Price
Established for
over 25 Years

Email: jellis9494@hotmail.co.uk
Find Us on Facebook

Call Scott on:
Mobile: 07703 397568

The Shires Sweep

**Chimney
Sweeping
Service**



Cowls and Bird Guards fitted,
smoke tests included, bird nest removal.

Fully Insured/Certificates issued

Call 07816 337962

Email: theshiresweep@gmail.com

www.theshiresweep.co.uk

**W Goodwin & Sons
Funeral Directors**



38 Coventry Street
Southam
CV47 0EP

01926 812445
wgoodwin@dasurf.net

Family owned firm established 1895

Private chapels of rest.

New memorials and renovations to existing memorials.



**Local Painter
Decorator
and Plasterer**

Free Quotes

Call Harry Timmis on 07814 430125
or email: harrytimmis@hotmail.com

For all your Plumbing Repairs, Boilers,
Showers, Radiators, Bathrooms
& Central Heating



CH Plumbing & Heating

Call Chris on **01926 813546**
or **07712 211427**

e: **harveychris@hotmail.co.uk**

No job too small, all work fully guaranteed!

**BOSTOCK FIREWOOD
KILN DRIED HARDWOOD
LOGS & KINDLING**



Ring 01926 812319

Advertise here from only
£113.40 per month

**REACH 8000+ LOCAL
HOMES & BUSINESSES!**

Call 01926 811911 today for further details
or email peter@districtadvertisers.co.uk

**Call Southam Castles on
01926 815 467**
info@southambouncycastle.co.uk

MANY DESIGNS AND STYLES AVAILABLE!
including **NEW Soft Play Equipment** for hire

Princess & Pirate Themes available
Obstacle Course and Super Jumbo
Slide **NOW AVAILABLE!**
Suitable for indoor & outdoor hire!
Monday to Friday hires from £120

**WE DELIVER TO LEAMINGTON SPA, WARWICK, STRATFORD-UPON-AVON, KENILWORTH
COVENTRY, RUGBY, DAVENTRY, BANBURY, WARWICKSHIRE AND SURROUNDING AREAS.**

www.southambouncycastle.co.uk

fitrite

wardrobes of leamington spa
Est 1983

your local
bespoke
fitted bedrooms
& home office
specialists.

find us on



Proud
sponsors of



www.fitrite.co.uk sales@fitrite.co.uk

01926 312654

visit our showroom 7b jenton road CV31 1XS

TIMBER GARDEN BUILDINGS

'Quality Timber Buildings For All Your Needs'



Warwick Buildings
Nightingale Lane
Southam Road
Long Itchington
Warwickshire
CV47 9AT



**GARDEN OFFICES
TIMBER GARAGES**

01926 815757 | www.warwickbuildings.co.uk



ARE YOU PAYING FOR CARE WHEN IT SHOULD BE FREE?

Continuing healthcare funding is NOT means tested.
We have a specialist team who can help with:

- Continuing healthcare assessments – how to get started
- Eligibility review
- How to challenge a non-eligible decision
- 3 month and annual reviews
- How to prepare for an appeal

CONTACT US FOR A FREE INITIAL TELEPHONE DISCUSSION



JUDY TIMSON RGN

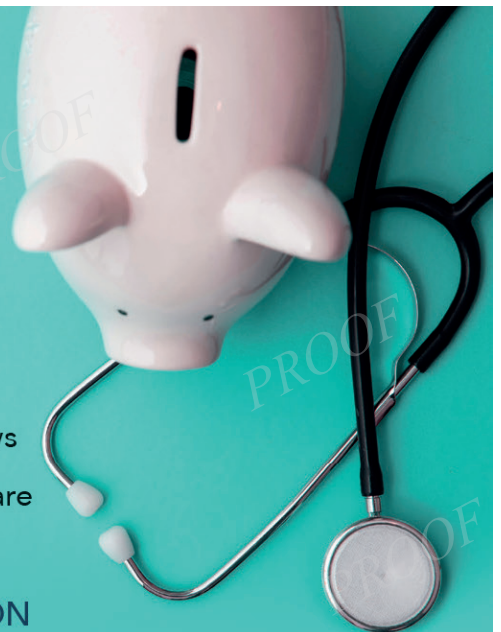
(Previously continuing healthcare assessor and appeals nurse)

E | JudyT@moore-tibbits.co.uk

T | 01926 354704



Moore and Tibbits have a 100% success rate on appeals in relation to NHS continuing healthcare funding.



www.moore-tibbits.co.uk

Westgate House, Market Street, Warwick, CV34 4DH



Spring Gardening

The RHS, along with Chief Horticulturist Guy Barter, have compiled a list of eight predictions to suggest what and how the UK's 30 million gardeners will be growing in the year ahead.

In 2025 gardeners will be tearing up traditional planting choices with front gardens and urban areas reimagined for a greener future. While gardening will increasingly have a purpose, it will also be sure to include plenty of fun and frivolity as people grow in ways that matter to them.

"Gardens never stand still and 2025 is likely to see not only new, exciting planting choices but new ways of designing, growing and maintaining spaces." - Guy Barter

The electrical vehicle revolution could usher in significant changes to what front gardens look like while city centres could be punctuated by many more growing spaces that serve the dual purpose of providing refuge for people and wildlife but also all-important flood proofing capabilities. Drawing on member enquiries, RHS Shows and garden trends, and unique industry insights, discover what lies ahead in the gardening year.

Blueberries are reported to be in high demand by growers and retailers. This highly palatable and attractive superfood is fairly easy to grow at home on compact bushes that have lovely flowers and autumn colour



Fruit trees and shrubs as well as perennial vegetables will continue to grow in popularity owing to their reliable annual bounty, low maintenance, and provision of shape, structure and habitat for wildlife. 2024 was the year of the blueberry owing to it being easy to grow on compact bushes with attractive flowers and autumn colour. Honeyberries, a new crop resembling blueberry that is oval in shape, requires even less attention and is increasingly available across the UK, including via RHS Plants, meaning it will start to appear in gardens and community growing spaces very soon

With the remarkable wet weather in the last 12 months gardening minds will be more focused than usual on drainage and water

Community gardens are increasingly at the centre of local water capture and storage, helping to meet the needs of the immediate space but also local people during extended dry spells. The proliferation of smaller scale growing spaces in more urban areas is also seen as valuable protection from flash flooding with plants helping to slow the flow of rainwater before being soaked up by the soil – nature's largest natural water butt. 2025 is expected to see a growth in so called 'sponge city' capabilities as developers and councils increasingly cotton on to the broader benefits of planted spaces.

Green roofs bring similar benefits to green walls, particularly in terms of air quality, biodiversity and often providing a wellbeing space

As research continues apace to evidence the benefits of plants, they'll start to feature in towns and cities in more creative but practical ways. Green roofs and walls will be sought out to provide all important thermal regulation for buildings, reduce flooding and sewage spills by capturing and slowing the flow of water, boost habitat provision, filter the air within spaces and along polluted roads and be used to cool solar panels on roofs to ensure good functionality, known as hortivoltaics.

2026 will see a continued shift away from traditional bedding plants towards more long lived, less thirsty and robust varieties, particularly in community gardens and public landscapes. Salvias, heather and dahlias have proved particularly popular alternatives with community gardening groups over the last 12 months, requiring little maintenance but providing the same sought-after pops of colour and pollinator appeal.

Free expert advice on all tree work!



**Scullion
Tree Care**

Bull Ring Farm Road, Harbury

Tree felling and dismantling

Crown reductions, lifts and thins

Specialist tree removal

Hedge and shrub trimming

Stump removal

Logs for sale

NPTC qualified workforce

Fully insured up to £5 million

Free arboriculture consultancy and advice

Friendly and reliable service

Call today for your free quotation

07776 694373

E: info@sculliontreecare.co.uk
www.sculliontreecare.co.uk

Horoscope for April 2026

April 2026 brings a surge of fresh energy and determination. Aries season drives bold action and new beginnings, while Taurus energy later in the month encourages stability and grounding. It's the perfect time to take initiative, then build something lasting from it.

♈ Aries (Mar 21 – Apr 19)

This is your moment, Aries! The Sun in your sign fuels confidence, courage, and momentum. You're ready to take charge and make things happen. Mid-month brings a breakthrough—trust your instincts and act decisively. A personal goal is within reach.

Love: Passion and excitement return.

Career: A bold move leads to success. **Lucky Days/Nos:** 3, 9, 18

♉ Taurus (Apr 20 – May 20)

As the Sun enters your sign later in the month, a sense of calm and clarity replaces earlier uncertainty. Use early April to rest and reflect, then step forward with confidence. Financial and personal stability begin to strengthen.

Love: Slow and steady builds trust.

Career: Practical decisions bring rewards.

Lucky Days/Nos: 20, 25, 29

♊ Gemini (May 21 – Jun 20)

Your social world is buzzing. April brings opportunities through friends, groups, and networking. A conversation mid-month sparks a promising idea—follow it through.

Love: A friendship may turn romantic.

Career: Collaboration leads to success. **Lucky Days/Nos:** 6, 14, 27

♋ Cancer (Jun 21 – Jul 22)

Career and public life take focus. You may find yourself stepping into a leadership role or receiving recognition. Stay grounded and trust your emotional intelligence.

Love: Supportive connections grow stronger.

Career: Recognition boosts confidence. **Lucky Days/Nos:** 5, 16, 28

♌ Leo (Jul 23 – Aug 22)

April inspires you to think bigger. Travel, learning, or a new perspective brings excitement. Say yes to opportunities that expand your horizons.

Love: Adventure sparks romance.

Career: Growth comes through learning.

Lucky Days/Nos: 4, 12, 24

♍ Virgo (Aug 23 – Sep 22)

Transformation continues. Financial or emotional changes push you toward a stronger, more secure position. Trust the process, even if it feels intense at times.

Love: Deeper bonds form through honesty.

Career: Strategic planning pays off. **Lucky Days/Nos:** 7, 15, 22

♎ Libra (Sep 23 – Oct 22)

Relationships are in focus. April encourages balance, compromise, and clarity in partnerships. A key decision mid-month brings harmony.

Love: Commitment deepens.

Career: Teamwork brings results. **Lucky Days/Nos:** 8, 19, 26

♏ Scorpio (Oct 23 – Nov 21)

Daily routines and wellbeing take centre stage. Small, consistent changes lead to big improvements. Stay disciplined—you'll see results quickly.

Love: Stability replaces uncertainty.

Career: Productivity increases. **Lucky Days/Nos:** 2, 11, 23

♐ Sagittarius (Nov 22 – Dec 21)

Creativity and joy return. April encourages fun, romance, and self-expression. A spontaneous opportunity may lead to something exciting.

Love: Playful energy strengthens bonds.

Career: Creative ideas gain attention. **Lucky Days/Nos:** 10, 18, 30

♑ Capricorn (Dec 22 – Jan 19)

Home and family matters come into focus. A decision about your living space or personal life brings long-term stability.

Love: Comfort and loyalty deepen.

Career: Steady progress continues. **Lucky Days/Nos:** 1, 13, 25

♒ Aquarius (Jan 20 – Feb 18)

Communication is key this month. Important discussions or agreements bring clarity. Stay open-minded—new ideas bring growth.

Love: Honest conversations strengthen bonds.

Career: A deal or contract progresses. **Lucky Days/Nos:** 6, 17, 21

♓ Pisces (Feb 19 – Mar 20)

Focus turns to finances and self-worth. April encourages you to recognise your value and make decisions that support long-term security.

Love: Emotional security grows.

Career: A financial opportunity appears.

Lucky Days/Nos: 9, 20, 27

Apply to join our delivery team by visiting the below website:
www.districtadvertisers.co.uk/join

SOUTHAM STOMPERS

NEW BEGINNERS LINE DANCING CLASS

10-30AM - 11.30AM MONDAY

SOUTHAM COMMUNITY CENTRE IN FLYING FIELDS CV47 1AS

CALL NIKKI ON 07765 204927 FOR INFORMATION

www.southamstompers.co.uk | Approved instructor of the B-W-D-A

S Taylor Services

A reliable and friendly service covering all aspects of garden maintenance.

Fully qualified with over 15 years experience.

07494 369 630



Southam United Bowling Club

Sadly following on from the news of the deaths of past members earlier in the year of Margaret Woof and Mike Marsh we heard that John Dover had passed away. Unfortunately we had to cancel the Beetle Drive but the Coffee Morning in the Tom Hauley Room was well attended. Many members attended our pre-season get-together and took the opportunity to pay their subs. Hopefully those who haven't will have paid up by the time the green opens on April 13th. This year will see the club introducing a Friday Club night when anyone who want to try out bowls will be welcome to come along and have a go, Keep an eye out for the posters and on Facebook for more details. As usual we will be participating in a number of local leagues and have a full program of friendlies. Let's hope that the season will bring good weather, company and hopefully new members.

In the mean time if there is anybody out there who is interested in taking up bowls, or indeed any experienced player then please feel free to contact Ted on 612507, or Heather on 812135 for more information.

Alternatively details of the club can be found on our website www.southamunitedbowlingclub.org. The club have a number of friendlies with local clubs and also play in several leagues, both men and women. We normally also hold a series of social events throughout the year.

Harbury Milk Shed FRESH MILK

Direct From Our Farm



Gently pasteurised milk and milkshakes in reusable glass bottles

Enjoy a Coffee or Hot Chocolate made with our milk from our coffee machine

We also sell locally produced eggs, bacon, cakes and cheese

Call 07733158680



STARRE DESIGN & PRINT

For all your **PRINTING NEEDS!**

Business Cards



Leaflets & Flyers



Brochures



& More!

SPECIAL OFFER!

Call Now: 01926 811911

Email: peter@starre.co.uk

EC ROOFING



- ◆ New Roof & Roofing
- ◆ Concrete Gutters Lined (one piece systems)
- ◆ Repairs Flat Roofs
- ◆ Guttering Repairs
- ◆ UPVC Fascias
- ◆ Building Repairs
- ◆ Repointing
- ◆ Painting Services
- ◆ Chimneys Repointed
- ◆ Free Estimates

👍 Warwick Based 👍

😊 Customer Friendly 😊

Call: 07852 274958

Email: eddiecoyle1@live.com

Down The Garden Path

Pete's Piece by Farnborough Garden Centre

April: The month of April is probably one of the most exciting months for gardeners with new plants bursting into life daily and a mixture of new foliage and flowers appearing everywhere. For those that listen, a real change in birdsong can be heard this month, and bees and other insects start to become active - but beware - April is often a cruel month weather-wise and plant damage can occur.

Monthly Reminders

Newly planted trees and shrubs - this can be a deceiving month with cool but very dry spells making us forgetful. Do remember to water all newly planted trees and shrubs regularly as they could dry out very quickly this month despite it being cool. The fact that your new plant is in the soil, does not mean it will survive without water and attention on a frequent and regular basis from day one.

Roses - start treatments against 'black spot' this month including soil beneath the bushes. Complete pruning early this month.

Summer bulbs and tubers - there is still time to plant these for some exotic blossoms in the summer. A full range is on sale at Farnborough.

Alpine and herbaceous plants - now is an excellent time to plant new borders or rockeries or add to your existing

areas. A wide selection of plants are now arriving at Farnborough in a range of sizes.

Garden Ponds - if you intend to create a new water garden or restock an existing pond, this is a good time to commence planting. A full range of plants will start to appear here this month.

Sweet Peas - Sweet peas that have been over-wintered can be planted out this month and new seeds can be sown. If you prefer to use young plants, then these will become available this month.

Hanging baskets and containers - If you have a greenhouse or conservatory, you may want to start planting-up these this month using young plants. They must, however, be kept indoors until all danger of frost has passed. A wide range of plants are now on sale, but should you decide that you want your basket made up for you, don't delay as we have a maximum space for baskets and have to close our customer list once this is reached. If you need new, ready-planted Baskets or Containers, these will start to appear for sale in early May, once the danger of frost has passed.

Vegetables - lots of vegetable plants will be on sale at Farnborough now for use under glass or out of doors. Even if your garden is small, try and give some space to grow fresh vegetables. The special taste of home-grown vegetables may surprise you.

Plants looking good this month:

- Species Clematis - Magnolias
- Cistus (Broom) - Rhododendron
- Viburnum - Amelanchier Malus (Crab Apple) - Prunus (Cherry)

Lots of our over-wintered and newly arrived stock is now on our display areas including a huge range of garden tress, shrubs, climbers, conifers and roses. We now have a renewed selection of stepping stones, paving, edging stones, chippings, cobbles and rockery stone. So, why not visit us to look around, when we shall be pleased to offer any help or advice that you may require.

We hope to see you soon.

Pete's Top Tips

- Prepare for Spring

Spring arrives this month as early flowers, tree blossoms & flowering shrubs burst into life.

1. Tubs & Planters

If you already planted them, now is the time to clear last years plants & prepare for early Spring displays. Early flowering bedding is now available to add colour to your garden.

2. Summer flower bulbs & tubers

These are still available & most can now be safely planted outdoors. Dahlias are an especially colourful plant for pots or borders.

3. Greenhouses

Changeable weather can cause problems in heated greenhouse so keep an eye on this and don't forget ventilation. Now is the time to start planting tomatoes, peppers & cucumbers etc for fresh salad crops later.

4. Garden Ponds

If the weather is kind then this month is a good time to clean and restock ponds. New plants will be appearing at Farnborough Garden Centre now.

Step into Spring at The Garden Lovers Garden Centre

A Traditional Garden Centre that focuses on providing quality plants, garden products, home ware and gifts.

Teddy Lovers
Come and see our range of Bears including Limited Editions, cuddly collectables and everyday hugables.

On A423 Southam Road Nr. Farnborough, Banbury OX17 1EL
Tel: (01295) 690479

OPEN 6 DAYS A WEEK
Tue - Sat 9am - 5.30pm
Sunday 10:30am - 4:30pm
Open Bank Holiday Mondays

A world of Choice

CLOSED EASTER SUNDAY, OPEN EASTER MONDAY

Farnborough Garden Centre
Harefurlong Nurseries
www.farnboroughgardencentre.co.uk



EASTER POEM

When Easter dawn begins to glow, It tells of sorrow overcome,
And softer springtime breezes blow, Of brighter days that still will come,
The world awakes in gentle light, Of courage born through darkest night,
With skies of blue and blossoms bright. And hearts renewed by morning light.

The lambs run free across the field, It whispers peace to those who grieve,
The earth its winter sleep does yield, And gives the weary cause to believe,
And birds rejoice in song above, That from the pain we carry through
As if the air itself holds love. Can rise a strength both pure and new.

The daffodils in golden line Let kindness bloom in all we do,
Stand bright beneath the sun's warm shine, Let thankful hearts shine softly through,
While branches dressed in budding green For every gentle word we say
Declare the beauty of the scene. Can bring new hope this Easter Day.

Yet Easter is not spring alone, Let family gather, friends draw near,
Nor only joy the earth has shown, With grateful hearts and Easter cheer,
It speaks of hope, of life made new, And may the table, full and bright,
Of faith restored and promises true. Be warmed by love and shared delight.

For Easter brings a message clear:
That light and joy are always near,
And even after darkest days
Hope finds its path in quiet ways.

So may this Easter bless your heart
With peace that never shall depart,
And may you find in all you do
New faith, new joy, and life anew.

C J & N D Wright

26 St. Marys Close, Southam

All types of drives constructed to new permeable surface regulations.

Drop Kerbs - fully insured & registered under the new street works act.

tel: **01926 814541**

mob: **07850 293967**



Iain's
Gardening Services

Clearance- Turfing - Hedge Trimming
Fencing - Grass Cutting
All Your Gardening Requirements
Mobile: **07799 107867**



STEVE'S CAR

Locally based taxi service

Available for all Airport,
Sea Port & Domestic Trips

07891 075955
01926 814092
Email: Stephenw26268@googlemail.com

JACK COOPER
Home (01926) 613134
Mobile 07973 258653
Email jack.turf@tiscali.co.uk

Lawns, Fencing, Decking etc.
Garden Clearance and
Garden Maintenance.
Also Mini Digger Work

TURF



STARRE
DESIGN & PRINT
For all your **PRINTING NEEDS!**

Business Cards
Greenleaf Landscaping, VISION CREATIVE, Beauty Salons

Leaflets & Flyers
Pizza SPECIAL Christmas 50% OFF, FITNESS GYM

Brochures
ABOUT UR COMPANY, DISC OF Greece

& More!
SPECIAL OFFER!, ANNUAL CONFERENCE

Call Now: 01926 811911
Email: peter@starre.co.uk

SPECIALISTS IN AUTOMOTIVE PAINT & BODYWORK

SOUTHAM BODIES



- Insurance, Private and Trade Repairs
- Show Winning Repaints
- Detailing & Paint Correction
- Wheel Refurbs
- Modified Car Part Suppliers
- Loan Cars available

CONTACT Greg Howell, Southam Bodies

Tel: 01926 813676

Email: Greg@southambodies.co.uk

Website: www.greghowell.co.uk

Instagram: [greghowell_](https://www.instagram.com/greghowell_)

PC Doctor

Spotting Scams Before They Catch You Out

Scams are becoming more convincing every year. Gone are the days when every fraud email was full of spelling mistakes and obvious nonsense. Today's scams can look professional, urgent and completely believable. They may arrive by email, text message, phone call, social media, online marketplaces or even through fake websites that look identical to the real thing.

The good news is that most scams still follow the same basic pattern: they try to make you panic, rush, trust too quickly, or hand over information you should keep private.

Common Scams and Warning Signs

1. "Your bank account has been compromised"

You receive a text, email or phone call claiming to be from your bank. It says there has been suspicious activity on your account and you must act immediately. The message may include a link or ask you to confirm personal details.

Warning signs: urgent wording such as "act now" or "your account will be frozen"; a phone number or link asking you to log in; requests for passwords, PINs or one-time passcodes; messages that create fear and pressure.

What to do instead: Do not click the link or use the number in the message. Contact your bank directly using the number on your bank card or official website.

2. The parcel delivery text

A text arrives saying a parcel could not be delivered and asks you to pay a small fee to rearrange delivery. Because the amount is small, many people pay without thinking.

Warning signs: unexpected parcel notifications; web links that look odd or unofficial; requests for card details over a very small charge; generic wording rather than your full name or order details.

What to do instead: If you are expecting a parcel, go directly to the courier's official website or app rather than clicking the text link.

3. Fake computer support calls

A caller claims to be from Microsoft, your broadband provider, or a security company. They say your computer has a virus and ask you to install software so they can "help".

Warning signs: unsolicited phone calls about your computer; claims that they can see viruses or hacking activity remotely; requests to install remote access software; pressure to pay for a repair or subscription immediately.

What to do instead: Hang up. Real companies do not cold-call you out of the blue to fix your computer.

4. The "friend or family member in trouble" message

You get a WhatsApp or text message from an unknown number saying, "Hi Mum, I've lost my phone. This is my new number." Soon after, they ask for money urgently.

Warning signs: new number, emotional tone, urgent request; pressure to transfer money quickly; excuses for why they

cannot call; unusual bank details.

What to do instead: Contact the person on their normal number or through another method before doing anything.

5. Fake shopping websites and marketplace bargains

A website or seller offers designer goods, electronics or popular items at an unbelievable price. The website may look polished, but once payment is made, the goods never arrive.

Warning signs: prices far below normal retail value; no clear contact details or returns policy; new or unfamiliar websites with no real reviews; payment requests by bank transfer rather than secure checkout.

What to do instead: Use trusted retailers, pay by card where possible, and be suspicious of bargains that seem too good to be true.

6. Romance and social media scams

A scammer builds trust over time through dating sites or social media, then eventually asks for money, gift cards or financial help.

Warning signs: they move the conversation off the platform quickly; they avoid video calls or meeting in person; their story is dramatic and often involves emergencies; requests for secrecy or money.

What to do instead: Never send money to someone you have only met online, no matter how convincing the story sounds.

7. Fake charity appeals

Scammers often take advantage of public sympathy during disasters, wars or local emergencies by posing as charities.

Warning signs: emotional pressure to donate immediately; poorly verified links; no registered charity details; messages shared widely on social media without official sources.

What to do instead: Go directly to the charity's official website and check it carefully before donating.

How Scammers Persuade People

Scammers usually rely on one or more of these tactics: **urgency** — they want you to act before you think; **fear** — they frighten you into responding; **authority** — they pretend to be your bank, HMRC, police or a trusted company; **greed** — they tempt you with prizes, bargains or investment returns; **emotion** — they use worry, sympathy or family pressure. Whenever a message makes you feel rushed or alarmed, stop and check.

A Simple Safety Rule

Pause. Check. Verify. Before clicking, paying, replying or downloading anything, ask yourself: was I expecting this? Is this the official website or number? Am I being rushed? Have I independently verified it? If in doubt, do nothing until you have checked properly.

What To Do If You Think You've Been Scammed

If you think you may have fallen victim to a scam, act quickly. The sooner you respond, the better the chance of limiting any damage.



NT Pointing Services
"Repair, Restore and Preserve"

- All Pointing jobs big or small covered
- Traditional or modern, stone or brick (Specializing in lime mortar)
- General Property Maintenance

For a free Quotation - Call Nige
07866 566286 - 01327 340885
nigeltimms@hotmail.co.uk

QUALITY RE-UPHOLSTERY
TITHECREST
Domestic & Commercial
Antiques - Modern
(01926) 813865



ChrisBerry&Sons
Mobile Locksmith

- UPVC Multi - Lock Systems
- Lock Replacement
- Emergency House & Garage Opening

No Call Out Fees - All Work Guaranteed
No Fix - No Fee/OAP Discounts

 **01926 733257**
 **07944 243566** 

1. Contact your bank immediately. If you have given away card details, bank details, or made a payment to a scammer, contact your bank or card provider straight away. Ask them to put a stop on your bank card, freeze or monitor your account, cancel suspicious payments, issue a replacement card and advise whether a chargeback or fraud claim can be made.

2. Change your passwords. Change the password for the affected account at once. Then change any other accounts using the same or a similar password, especially email, online banking, shopping websites, payment services and social media accounts. Choose strong, unique passwords for each account.

3. Turn on two-factor authentication. Where available, enable two-factor authentication on your important accounts. This gives extra protection even if someone knows your password.

4. Check your email account first. Your email account is often the key to everything else. If a scammer gets access to your email, they may be able to reset passwords on other services. Change your email password urgently and check for forwarding rules you did not set up, recovery changes and unfamiliar logins.

5. Scan your device. If you clicked a suspicious link, opened an attachment, or allowed someone remote access to your computer, phone or tablet, run a full antivirus and malware scan, remove unknown software or apps, and get professional help if you are unsure.

6. Watch your accounts carefully. Keep a close eye on your bank statements, card transactions, email inbox, online shopping accounts and mobile phone account. Look for small test transactions, unfamiliar purchases or account changes.

7. Contact companies linked to the scam. If the scam involved a shopping site, PayPal, Amazon, eBay, social media account, or another service, contact their official support team immediately through their real website or app.

8. Warn family or contacts if needed. If your email, Facebook, WhatsApp or another account has been compromised, warn your contacts. Scammers often use hacked accounts to target other people.

9. Report the scam. In the UK, scams can be reported to Action Fraud, your bank's fraud department, the police if there is immediate danger or threats, and the relevant platform involved.

10. Do not feel embarrassed. Many intelligent and careful people get caught by scams. Fraudsters are skilled at creating pressure and confusion. The important thing is to act quickly and calmly.

The Don't List

Don't click links in unexpected emails or texts.

Don't give out passwords, PINs or passcodes.

Don't allow remote access to your computer for an unsolicited caller.

Don't trust urgency on its own.

Don't transfer money just because someone sounds convincing.

Don't believe every caller ID, email address or logo you see.

Don't shop on websites just because they look professional.

Don't save card details on unknown websites.

Don't send money to "family" without confirming it is really them.

Don't respond to threats about taxes, fines, parcels or banking without checking independently.

Don't share too much personal information on social media.

Don't assume small payments are safe just because the amount is low.

Don't be embarrassed to hang up, delete a message or walk away.

Don't ignore your instincts if something feels wrong.

Don't keep using a compromised bank card or account.

Don't delay contacting your bank.

Don't reuse the same password on other accounts.

Don't ignore small suspicious transactions.

Don't continue speaking to the scammer once you realise something is wrong.

Scams succeed because they catch people off guard, not because people are foolish. Anyone can be targeted. The best defence is to slow down, be cautious and verify everything through official channels. And if the worst does happen, quick action can make a huge difference.

Stop the card. Change the password. Check the email. Scan the device. Contact the bank.



Grineaux Accountants



Accountants, Taxation & Business Advisors

- Fixed Fees
- Prompt Service
- Pro-active Tax Advice



Our Range of Services include:

- All tax returns
- Self Employed Accounts
- Company Accounts & Returns
- Contractor Accounts
- All Payroll & VAT

Contact us

Tel: 01926814578 Email: office@grineaux.co.uk
20 Market Hill, Southam, Warwickshire, CV47 0HF



CONTACT- 07903-398533
FACEBOOK- PHILIPPA'S
INSTAGRAM- PHILIPPAS.FARMSHOP



7 CRAVEN LANE,
SOUTHAM,
CV47 1UU



32A, HIGH STREET,
BUGBROOKE,
NN7 3PA

Event catering

FUNERALS, BUFFETS,
CORPORATE EVENTS,
PARTIES AND MORE!

YOUR LOCAL FARMSHOPS,
SELLING A RANGE OF MEAT,
BREAD, VEG, COFFEES,
CAKES AND SO MUCH MORE!

WE CATER A RANGE OF EVENTS
FROM 2 TO 200+, WITH FOOD
TEAS AND COFFEES ALL
SERVED ON CHINA.

OPEN TUESDAY THROUGH
TO FRIDAY 8AM-5PM AND
SATURDAYS 8AM-1PM

COMMUNITY EVENTS

Adults Roller Disco

Welcoming skaters of all abilities. Join our friendly group at Graham Adams Centre, 1st & 3rd Fridays, 8-9:30pm. £5 per session. Booking is essential. Contact: southamrollerskaters@gmail.com

Grandborough Farmers' Market

Held on the 1st Thursday each month at St Peter's Church, CV23 8DH, 10am-12:30pm. Café available with homemade cakes, sausage rolls, tea & coffee at £1 each.

Contact: No booking required - just drop in.

Harbury Juniors Football Club

Football club for boys and girls from Years 1-8. Regular coaching sessions and match opportunities in a friendly setting.

Contact: Keith Hanson on 07730 635298

Harbury RFC - Girls Junior Touch Team

A welcoming team especially for girls aged 10-14. Fun, inclusive sessions focused on team spirit and touch rugby skills.

Contact: harburyfc.enquiries@gmail.com

Harbury Tennis Club

Year-round tennis for all ages in a relaxed atmosphere. Social sessions: Tues 6pm, Thurs 6.30pm, Sun 10am.

Contact: Colin on 07850 542799

Harbury Rugby Club

Training for all age groups: Juniors, Colts, and Seniors on Tues & Thurs from 7pm. Minis and Juniors on Sunday mornings.

Contact: 07706 155358

Harbury WI

Monthly meetings with talks and activities. We meet on the 2nd Thursday of each month at 7.30 for 7.45pm in the Tom Hauley Room. Contact Lin Hayes - Tel: 01926 613448.

J12 Model Radio Racing Club

Meet at Knightcote every Sunday. A great way to enjoy competitive radio-controlled racing in a friendly environment.

Contact: John Hazelworth on 07786 325000

Knightcote Model Boat Club

¼ acre water site at New House Farm, Knightcote. New members are always welcome to join and sail. Contact: 01926 612827

CLUBS & SOCIETIES

Ladbroke Photography Club

Meets monthly on the 1st Tuesday at 7.30pm in the village hall. Open to photographers of all levels for sharing, learning and discussion.

Contact: ladbroke.photoclub@btinternet.com

Ladbroke & Deppers Bridge WI

We meet on the 1st Thursday of the month at 7.30pm in Ladbroke Village Hall. A warm welcome to all ladies.

Contact: 07770 786981 / 07890 965504

Leamington & Warwick Model Railway Society

Thursday evenings at 7.30pm, New House Farm, Knightcote. Enthusiasts of all gauges welcome.

Contact: Pete Hutchinson on 07817 398903

Leamington Hastings Bowls Club

Indoor Short Mat Bowls every Wednesday 2-4pm (Sept-April). Outdoor Lawn Bowls Wednesdays 6pm-dusk (April-Sept). Friendly, inclusive club with free taster sessions. Contact: Join us at Leamington Hastings Parish Hall or green

Leamington Hastings Hall Hire

Versatile venue for all occasions. Accommodates 100 seated guests, includes stage, kitchen & parking. Ideal for clubs or private hire.

Contact: info@lhparishhall.co.uk - Birdingbury Road, CV23 8EA

Line Dancing - Bishops Itchington

Wednesdays, 10.30-11.45am at The Memorial Hall. Fun and relaxed sessions for all abilities.

Contact: Join in on the day - all welcome

Long Itchington Baby & Toddler Group

Wednesdays 9.30-11am (term time). Crafts, snacks and fun. £3 per adult & child, 50p per extra child. Held at Long Itchington Community Centre. Contact: Courtney Adam on 07487 858430

Long Itchington History Group

Meet every 2nd Wednesday monthly, Sept-May, at 7.30pm in the Community Centre. Talks, discussions and local history events.

Contact: See full programme at www.longitchingtonhistory.org.uk

Long Itchington Netball Club

Thursdays 7.30-9pm at Bishops Itchington court. Play for fitness, fun or league matches. Friendly team atmosphere.

Contact: longitchingtonnetballclub@gmail.com

Long Itchington Tennis Club

Social tennis Saturdays at 10am. Welcoming club for all standards with low-cost annual membership. Contact: Christine Williams on 07766141793

VILLAGE GROUPS & CLUBS

Long Itchington Wednesday Club

Meets every 2nd Wednesday of the month at 2.30pm in the Community Centre. Friendly gathering with varied activities.

Contact: Marion Constable on 01926 289064

Long Itchington WI

Meets on the 3rd Wednesday of each month at 7.30pm in the Community Centre. All welcome.

Contact: secretary.liwi@gmail

Marton Local History Group

Last Monday of each month at 7.30pm in the War Memorial Village Hall. Presentations by members and guest speakers.

Contact: See www.martonvillage.com for details

Southam Carnival Committee

Volunteers of all ages welcome to help plan and run this popular annual event. Monthly meetings at the Sports & Social Club.

Contact: Terry Grey on 01926 817744

Napton Environmental Action Team (NEAT)

Join NEAT to take action on local climate issues and nature restoration in your home, community and workplace. Contact: Jonathan on 07910 124324

Napton Art Group

Meet Thursdays 2-4pm at Napton Village Hall. Demonstrations and paint-as-you-please sessions. All abilities welcome.

Contact: Jane on 01926 812966

Napton Tennis Club

Social tennis Saturdays at 2pm, Sundays at 10am. Welcoming members of all abilities. Friendly village club. Contact: Linda on 07870 301793

NCT Southam Bumps & Babies

Fridays 10-11.30am, Graham Adams Centre. Peer support group for parents and babies. Free infant feeding support also available.

Contact: coordinator.southam@nct.org.uk

RNLI Leamington Spa & District

Seeking volunteers to assist with events and fundraising. Help raise vital life-saving funds.

Contact: Chris Daly on 07932 640582 or christine.daly@ntlworld.com

Rotary Club of Southam 2000

Supports local and international causes. Meets twice monthly at Fox & Hen, Bascote Heath and via Zoom on alternating weeks.

Contact: president@rotary2000.org.uk

COMMUNITY SERVICE & SUPPORT

Royal British Legion - Galanos Branch (BR4049)

Become part of a supportive network with regular activities and shared interests. Open to all supporters of the Armed Forces. Contact: Galanos.Chairman@rbl.community or 07850 431127

Single Boots Walking Club

Friendly Midlands-based walking club for single people. Day walks, evening strolls, weekends away and socials throughout the year. Contact: Visit www.singleboots.co.uk for more information

Southam & District Friendly Bridge Club

Meet at the residents lounge at Tythe Lodge Mondays at 6.30pm and Wednesdays at 1.30pm (Chicago format). All levels welcome. Contact: Hilary on 01926 612789.

Southam Lions Club

Community group raising funds for local causes. Meetings 1st & 3rd Wednesdays, 8pm at the Social Club. Furniture sale 2nd Saturday monthly, Co-op car park. Contact: Ian de-Lancey on 07733 100481

Southam Baking Circle

Monthly meet-up for baking enthusiasts. 2nd Thursday, 7-9pm, Southam Congregational Church. New members welcome. Contact: 07764 447604

Southam Book Festival

Annual celebration of literature, authors and readers. Planning for 2025 now underway. Get involved or stay informed. Contact: southambookfest@gmail.com

Southam Business Community CIC

Supports local businesses with free networking and events. Monthly meetups and community engagement. Contact: Larissa on 07802 228125.

Southam Christmas Lights Association

Volunteer group bringing festive cheer to Southam. Help make the magic happen each year. Contact: Terry on 01926 817744

SPORTS & OUTDOOR ACTIVITIES

Southam Cricket Club

Welcomes male and female players from age 8 upwards. Friendly and competitive cricket in a supportive environment.

Contact: Visit southam.play-cricket.com

Southam Darby and Joan Club

Meets on the 1st Friday of the month at 2pm, Southam Sports and Social Club. Social afternoons for older residents. Contact: Ann on 01926 814294

Southam in Bloom

Meets 2nd Tuesday monthly, 7.30pm at Southam Sports & Social Club. Volunteers welcome to help keep Southam looking beautiful. Contact: Tessa on 01926 815086 / Sue on 01926 817822

Southam Ladies Running Group

Jog, walk, or run together 6.30pm Mondays and 6pm and 7pm Wednesdays. Meet outside Southam Library. All levels welcome. Contact: Sharon on 07305 936117

Southam Produce Association – Allotments

Plots available at Welsh Road East. Grow your own and be part of a friendly gardening community. Contact: 07711904984

Southam Produce Show

Annual event showcasing local talents in crafts, baking, horticulture and more. Volunteers welcome to help plan this popular show. Contact: southamshow@outlook.com

Southam Ramblers

Walks on alternate Wednesdays. Meet 9.20am at Wood Street car park. Friendly walking group exploring local countryside. Contact: Richard on 07969 960968

Southam Rugby Club

New players and members welcome. Seniors, juniors and minis teams with expert coaching. Training Tues/Thurs, juniors on Sundays. Contact: Seniors – 07519 890268 / Juniors – 07712 877272

Southam Short Mat Bowls Club

Meet Thursdays, 1.45–4pm at Grange Hall. Friendly, non-league group. All welcome. Contact: 01926 812149

SOCIAL & CULTURAL GROUPS

Southam Twinning Association

Southam is twinned with Marolles-en-Hurepoix in France. Join us for cultural exchanges and international friendship. Contact: Roger Lane on 01926 813075

Southam United Bowling Club

Based at Lark Road, Southam, CV47 2WF. Friendly and welcoming bowling club for players of all levels. Contact: Ted Coupe on 01926 612507.

Southam United FC

Open to male and female players from age 5 upwards. Training and matches for all age groups in a supportive environment. Contact: Amanda Wignall on 07929 589602

Southam Vision Support Centre

For those with any degree of sight loss. 1st Tuesday each month at Wattons Lodge, 2–3.30pm. Socials, support, and equipment demos. Contact: 01926 411331

Advertise here
from only £55.13
per month

**REACH OVER 8000
LOCAL HOMES &
BUSINESSES!**

Call 01926 811911 today
for further details or email
peter@districtadvertisers.co.uk

YOUR GUIDE TO LOCAL CLUBS, GROUPS AND EVENTS

This directory brings together a wide range of community life across Southam and the surrounding villages, highlighting clubs, activities, support services and social groups for all ages and interests. From sports, fitness and outdoor pursuits to arts, culture, volunteering and wellbeing support, it showcases opportunities to get active, learn new skills, meet others and become involved locally. Whether you are looking for regular weekly activities, family friendly groups, creative outlets, social connections or ways to support your community, the listings provide clear information on what is available and how to take part.

Southam Gardening Club

Meets monthly on 3rd Monday at 7.15 for 7.30 at Communal Hall, Tithelodge, Little Park, off Park Lane, Southam. All are welcome. Non-members £4.50. Refreshments, from 7.15pm, included. Full details on the club's web page at <https://tinyurl.com/4jnteww3> or our Facebook page, or ring us on 01926 813986 or 815086

Southam Mothers' Union

Parish-based group meeting monthly to support families through prayer, projects and advocacy. Open to all, not just mothers. Contact: Annie Lane on 01926 813075

Stockton Film Club

Monthly screenings on the last Saturday at Stockton Village Hall. Film at 7pm, optional supper at 6.30pm. Contact: Steve on 01926 815376.

Stockton Petanque Club

Play petanque (boules) every Saturday afternoon at Stockton Football Club. All ages welcome. Boules and tuition provided. Contact: John on 01926 814267

Stockton Whist Drive

Held on the 2nd Saturday of the month at 7.30pm in Stockton Village Hall. All levels welcome. Contact: Join on the night – no booking required

Southam WI

Welcoming ladies of all ages. Meet on the 1st Tuesday monthly, 7.30pm at the Roman Catholic Church Hall, Wood Street. Contact: Ann on 01926 814294

Swan Singers

Lively mixed choir singing all genres. Tuesdays at 7.30pm, Kineton. No auditions – just enthusiasm! Great social and health benefits. Contact: 07791 769102 or admin@swansingers.uk

COMMUNITY HUB ACTIVITIES

Chatty Café Table – FREE

Tuesdays, 10–11.30am at the Community Hub Café. Join volunteers at our 'chatty table' by the window for a warm drink and even warmer conversation. Contact: Just come along – everyone welcome

Dementia Café – FREE

Fridays, 2.30–4pm at the Community Hub Hall. Dementia-friendly café with activities including music, games and reminiscence. Open to those with dementia and their carers. Contact: No booking required – drop in

Nosh and Natter

1st Wednesday each month, 12–2pm, Community Hub Hall. Enjoy a 2-course homemade meal, quiz and great company. Transport available from Southam Library and St Wulstans Court. Contact: Booking essential – call 01926 812185 Ext 5365

Armed Forces & Veterans Breakfast Club

2nd Saturday, last Wednesday & last Saturday monthly, 10am–12 noon at the Community Hub Hall. For veterans and serving personnel. A space for camaraderie, connection and banter. Buy your own breakfast. Contact: Just turn up – no fees or booking required

Silver Sunday – FREE

When: Sunday 6th July at the Community Hub
When: Sunday 5th October (National Silver Sunday) at The Grange Hall
What to expect: Join us to celebrate older people in our communities. Come alone or bring a friend and have a dance. Includes free refreshments and live music. Everyone is welcome.

CREATIVE & PERFORMANCE GROUPS

Table Tennis – Southam

Friendly, non-league table tennis for all abilities. Tuesdays at 7.15pm, Southam Primary School, Welsh Road. Contact: 01926 814724

The Grange Players – Amateur Dramatics

Tuesdays at The Grange Hall. Ages 7–16 meet 6.30–8pm; Adults from 8–10pm. Local theatre group for all skill levels. Contact: Lesley Foster on 01926 812183

The Melody Makers Ladies Choir

Rehearses every Thursday 11am at The Graham Adams Centre in Southam. New members are always welcome. No audition required. If you enjoy singing or would like to try us out phone Julie 07713 919010 or email thesouthammelodymakers@gmail.com

Tuesday Club – Congregational Church

Meets Tuesdays at 2.15pm in the lounge of the Congregational Church, Wood Street, Southam. Friendly group with varied programme. Contact: 01926 812695

Tunes & Tales – Harbury Library

Songs and stories for children aged 0–5 every Thursday at 9.15am. Biblio's Café open afterwards for parents and carers. Contact: 01926 258776.

Warwickshire Conservation Volunteers

Looking for new members to help with countryside and nature conservation tasks around the county. Contact: Visit: www.wcvgroup.org.uk for details

Warwickshire Vision Support – Southam VIP Club

3rd Wednesday each month at Wattons Lodge. Social support for those with sight loss. Tea, cake, and varied activities. Contact: 01926 411331.

Windmill Singers – Southam

Love to sing? Join us Thursdays 2–3.45pm at Graham Adams Centre. No auditions – all

Here's a solid shortlist of day outings in and around Southam, Kineton and Wellesbourne for April and early May.

Very local picks

Burton Dassett Hills Country Park near Southam is a strong choice for a simple spring outing: walks, big views, picnics and kite-flying. Warwickshire County Council describes it as rugged hilltops with panoramic views and woodland paths.

Wellesbourne Market runs every Saturday and on summer bank holiday Mondays, 8:30am–3pm, with free entry and parking, so it works well for a casual morning or half-day trip.

Chedham's Yard, Wellesbourne is a restored blacksmith's and wheelwright's yard, open on Saturdays from Easter/early April into September, and entry is free.

Best dated outings in April / early May

Southam Teatime Classical Concert at the Graham Adams Centre is on 25 April 2026, 3pm–5pm.

Southam Triathlon takes place on 26 April 2026 at Southam School/Leisure Centre. Even if not competing, it could make a lively local spectator outing.

Kineton Sports & Social Club lists An Evening With Medium Mark Brandist on 18 April 2026 and Live Music – Echoes Acoustic Duo on 2 May 2026.

Wellesbourne Library has an Easter Holiday Activities: Reading Around the World drop-in event, useful for a family outing.

Nearby larger day trips worth the short drive:

British Motor Museum, Gaydon is open daily and has several April events including Jaguar Breakfast Club (4 April), Gaydon Gathering (14 April), Museum on the Move (17 April), Rustival (18 April) and Ultimate BMW Meet (26 April).

Compton Verney is open Wednesday–Sunday, with grounds and galleries open through April, making it a dependable art-and-gardens day out.

Charlecote Park has an Easter egg hunt/trail running into 12 April 2026, and the estate is open for general visits without prebooking for ordinary visitors. Upton House and Gardens has spring exhibitions running from late March plus an Easter trail from 28 March to 12 April 2026.

Warwick Castle is running Easter activities from 28 March to 12 April 2026, alongside its regular shows and attractions.

Stratford Butterfly Farm is running Easter activities from 28 March to 12 April 2026, and tickets for 2026 are available.

Hatton Adventure World has its Easter Eggstravaganza from 28 March to 12 April 2026, with baby animals and family activities.

Easy ways to plan it

For **walking/scenery**: Burton Dassett Hills, Charlecote Park, Upton House grounds.

For **families with children**: Wellesbourne Market, Butterfly Farm, Hatton, Warwick Castle, Wellesbourne Library Easter activity.

For **culture/history**: Chedham's Yard, Compton Verney, Southam classical concert.

For **motoring enthusiasts**: British Motor Museum at Gaydon is the standout.

A good Top 5 from this list would be: **Burton Dassett Hills, Wellesbourne Market, British Motor Museum, Compton Verney, and Charlecote Park.** Event times can still change, so it is worth checking the venue page again before setting off.

W L Property Repairs

Specialising in re-pointing or re-bedding, Ridges, Hips, Chimneys & Gable Ends. Also Felt Roofs. Family run business for over 30 years. All work Guaranteed. Free quotations for any job, big or small.

Tel: 07502 451970 | 01926 814916
 Email: will29.kelly@yahoo.co.uk
 Find us on Yell.com & Google | Check out our reviews



ATTENTION CHARITIES & COMMUNITY ORGANISATIONS

We're changing the way we organise and accept submissions.

To continue supporting your events, services, and announcements in the District Advertisers, a **monthly subscription is now required.**

- ✓ FROM JUST £5 PER MONTH
- ✓ PAID EASILY BY DIRECT DEBIT
- ✓ INCLUDES PLACEMENT IN OUR WHAT'S ON & COMMUNITY PAGES

This helps us manage space fairly and continue providing cost-effective support for the local causes that matter most.

TO REGISTER, VISIT:

www.districtadvertisers.co.uk

Let's keep sharing your work with thousands of local readers every month!

Whatever your property needs, our team of conveyancing specialists are committed to helping you every step of the way. We understand how important the transaction is & we never underestimate the need to get it right whilst making the process as simple for you as possible.

That's why our conveyancing services are personal. You will have a dedicated conveyancing lawyer who is not only highly experienced and professional but will work with you from start to finish. Which means you'll always have a point of contact who knows everything about your transaction & is available to speak for advice. As well as keeping you informed at all times, & being able to answer your queries, we'll be working on your behalf to ensure everything goes as smoothly as possible – & in the shortest timescales. If issues do arise unexpectedly, we have the know-how to resolve it quickly & with the outcome that is best for you.

Solicitors Kashifa Hussain & her Legal Secretary Dianne Turner are based in our Southam office, on Coventry Street.

We can help and guide you through the following:

- Sale & purchase of freehold and leasehold properties
- Shared ownership leases
- Buy-to-let investment property
- Transfers of equity
- Equity release
- Buying new build properties
- Remortgages



**BRINDLEY
T W I S T
T A F F T &
J A M E S**

SOLICITORS

Delivering tailored legal advice with one goal in mind - to provide a first class service.

Our experienced and qualified legal practitioners specialise in a comprehensive range of services that provide effective solutions to your personal and business needs

**54A Coventry Street
Southam
CV47 0EP**

**01926 217555
enquiries@bttj.com
www.bttj.com**


**Offices also located in
Coventry, Warwick & Balsall Common**

Our full range of services

*Wills - Lasting Powers of Attorney - Probate - Family & Divorce Conveyancing
- Commercial Property - Corporate & Commercial Employment Law -
Medical Negligence - Personal Injury
Dispute Resolution - Litigation - Notarial Services*



**Thinking About
Transforming Your
Home In 2026?**

Find us on 

WHAT WE DO BEST

- Kitchen Design & Fitting
- Bathroom Installations
- Bespoke Wardrobes & Storage
- Understairs Solutions & Boot Rooms
- Carpentry, Flooring & Internal Doors
- Full Internal Refurbishments

Where Style Meets Sustainability

www.greenspace-interiors.co.uk

**TEL: 01926 930 698
MOB: 07933 652476**

Advertise here from only £47.25 per month

**REACH OVER 8000 LOCAL
HOMES & BUSINESSES!**

Call 01926 811911 today for further details

RATS & MICE

**As the weather gets colder, rodents
will be looking for a home near you!**

Know the warning signs...

- Dirty or oily marks on walls and flooring
- Shredded paper, insulation etc.
- Unusual and unexplained smells
- Presence of droppings
- Unusual pet behaviour
- Scratching noises
- Knawing marks

Don't put up with rodents! Call me, your local, trusted and expert Pest Controller.

DBS approved & nationally accredited

Mark Robinson 01926 266 064
mrobinson@pestforce.co.uk
www.pestforce.co.uk



Health & Wellbeing

Health & Wellbeing: Spring Into April With Strength and Mobility

As April arrives and the days begin to brighten, many of us feel encouraged to step outside, breathe in the fresher air, and make a positive change to our daily routine. Spring is a season of renewal, and it offers the perfect opportunity to focus on health and wellbeing—especially when it comes to supporting the ageing process and keeping mobile.

Growing older is a natural part of life, but how we age can be influenced greatly by the choices we make each day. Staying active, eating well, and keeping both body and mind engaged can all play a major role in maintaining independence, confidence, and quality of life.

One of the most important factors in healthy ageing is mobility. Being able to move comfortably and safely allows us to continue enjoying everyday activities, whether that means gardening, shopping, visiting friends, or simply walking around the house with ease. Mobility is closely linked to strength, balance, and flexibility, all of which can be improved at any age with gentle, regular effort.

Walking remains one of the best forms of exercise for older adults. It is simple, free, and highly effective for improving circulation, supporting joint health, and keeping muscles active. Even a short daily walk can lift the mood, improve stamina, and reduce stiffness. For those who are less confident on their feet, light chair exercises, stretching, or supervised movement classes can also bring enormous benefits.

Balance is another key area to focus on as we age. Falls can become a greater risk over time, but regular movement helps strengthen the muscles that keep us steady. Activities such as tai chi, gentle yoga, or simple standing exercises can help improve coordination and stability. It is never too late to start, and even small improvements can make a meaningful difference.

Joint care is equally important. Many people experience stiffness in the knees, hips, hands, or back as they get older, particularly if they spend long periods sitting still during the colder winter months. April is an excellent time to get moving

again. Gentle stretching in the morning, taking regular breaks from sitting, and keeping the body warm can all help ease discomfort and improve flexibility.

Nutrition also plays a vital part in the ageing process. A balanced diet rich in fruits, vegetables, lean proteins, whole grains, and healthy fats supports muscles, bones, and the immune system. Calcium and vitamin D are particularly important for bone health, while plenty of water is essential for keeping the body functioning properly. Dehydration can sometimes go unnoticed in older adults, so making a point of drinking regularly throughout the day is wise.

Spring also brings more daylight, which can have a positive effect on mental wellbeing. Spending time outdoors, even for a few minutes, can boost mood, support better sleep, and

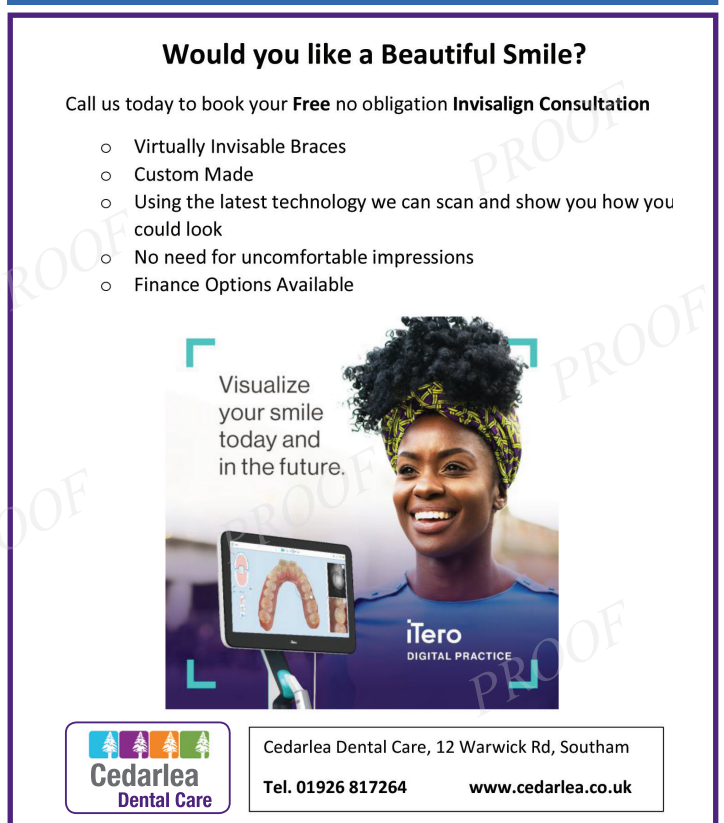


Back Problem? Try Bowen

patt stock
remedial therapy for all

Book your appointment now
by calling 07900 882977
enquiries.patt.stock@gmail.com

Brewsters Corner, Pendicke St. Southam



Would you like a Beautiful Smile?

Call us today to book your **Free** no obligation **Invisalign Consultation**

- Virtually Invisible Braces
- Custom Made
- Using the latest technology we can scan and show you how you could look
- No need for uncomfortable impressions
- Finance Options Available

Visualize your smile today and in the future.

iTerio
DIGITAL PRACTICE

Cedarlea Dental Care

Cedarlea Dental Care, 12 Warwick Rd, Southam
Tel. 01926 817264 www.cedarlea.co.uk



Deborah Coleman HCPC Registered MRCPod

Walking well in Warwickshire
Landline: 01926 945007
Mobile: 07807 635112

Tidy Feet
podiatry

www.tidyfeet.co.uk / info@tidyfeet.co.uk
74b Coventry Street, Southam, CV47 0EA

encourage a more positive outlook. Social connection is just as valuable. Meeting friends for a walk, attending a local group, or simply making time for regular conversation can all help reduce loneliness and improve emotional health.

Keeping mobile is not about running marathons or making drastic changes. It is about choosing simple, manageable habits that keep the body moving and the mind engaged. Taking the stairs when possible, pottering in the garden, stretching while the kettle boils, or enjoying a gentle stroll in the April sunshine all contribute to overall wellbeing.

Ageing well is about staying as active, strong, and independent as possible. This April, let the season be a reminder that small daily actions really do matter. By caring for our bodies, maintaining movement, and embracing healthy routines, we give ourselves the best chance to enjoy life fully at every age.

HEAVENLY FEET

Mobile Foot Health Practitioner



Treatments Include:

- Nail cutting
- Hard skin
- Callus & Corns
- Cracked heels
- Ingrown toenails

Email: pamelizabeth2@gmail.com

Mobile appointments in the comfort of your own home | Tel: 07427470871

The District Advertiser

NEW DELIVERY PEOPLE WANTED

**IN SOUTHAM, BIRDINGBURY,
BASCOTE, DEPPERS BRIDGE,
HARBURY, FENNY COMPTON**

If you are 13+ with 1-2 hours free one weekend at the beginning of each month, we would welcome you to our team delivering our District Advertiser magazine.

Fill out the online form
to join our waiting list

www.districtadvertisers.co.uk/join



SCAN ME

Tel: 01926 811911

Top 10 Tips for Healthy Ageing and Keeping Mobile

- 1. Walk every day**
A short daily walk helps keep joints moving, muscles working, and the heart healthy.
- 2. Stretch gently each morning**
Simple stretches can reduce stiffness and help you start the day feeling looser and more comfortable.
- 3. Don't sit for too long**
Get up regularly, move around the house, or do a few light movements every hour.
- 4. Work on your balance**
Gentle exercises like standing on one foot, heel-to-toe walking, or tai chi can improve stability.
- 5. Keep your muscles strong**
Light resistance exercises, gardening, or carrying shopping can help maintain strength.
- 6. Eat for bone and muscle health**
Choose foods rich in calcium, vitamin D, protein, fruit, and vegetables.
- 7. Drink plenty of water**
Hydration supports energy, concentration, and joint health.
- 8. Get outside when you can**
Fresh air and daylight can lift your mood and encourage natural movement.
- 9. Stay socially active**
Meeting others, joining groups, or chatting regularly with friends helps mental and emotional wellbeing.
- 10. Listen to your body**
Keep moving, but know your limits. Gentle, regular activity is better than overdoing it.



Southam Dental

Free No Obligation
Consultation – So
contact us for a chat

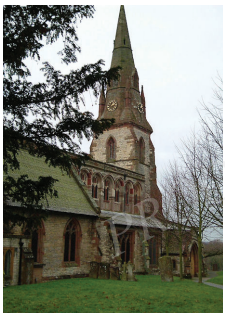
Looking for Dentistry you can afford?? Then come to Southam Dental.

Government NHS funding within our area has always been limited with some patients left unable to afford Dentistry they need.

We would like to bridge this gap between NHS and Private dentistry by offering our new **Independent** fee scale.

Come and see our Dental Therapist and experience dentistry that allows you choice. You can make your own decisions about how you want your teeth to look and feel at a cost you can afford!!

For more information Contact us today on **01926 814527** or email info@southamdental.co.uk



St James Church Southam. Church Office:
74D Coventry Street, Southam, CV47 0EA
Tel: 01926 812413

Stories Set in Stone by Jane Jones, Churchwarden

A stroll through the calm and peaceful St James Churchyard to enjoy the beautiful spring flowers is good exercise and a walk through the history of our small town.

In Medieval times, graves were marked with wooden crosses which have long since disappeared, but stones erected in the 17th and 18th centuries are chunky, their lettering handmade and charmingly uneven. Space was tight, chisels were blunt, and flowery prose was overrated. The inscriptions on the oldest stones are brief and businesslike: "Here lieth...", "In Memory of..."

By the 19th century, many monuments are still in local stone, mainly lias limestone and sandstone, but some gleam with polished granite, reflecting improved transport and Victorian flair for grandeur. Winged cherubs and poetic epitaphs bloom across the stone. Occasionally, a line of dry humour slips through - proof that wit, like hope, springs eternal.

This one from the stone of one John Dixon is a good example:

'This monument stone will show where lies an honest man. Let monarchs who are laid as low rise higher if they can.'

Some epitaphs glow with affection like this one on the stone of James and Ann Hancocks:

"Not gone from memory, not gone from love But gone to our father's home above."

Perhaps the most touching aspect of the churchyard is its democracy. Grand chest tombs cluster in prominent spots - the Oldhams (think cement) near the Lych gate and the Smiths (think Dr Henry Lilley Smith, founder of the first public dispensary in the country) overlooking Warwick Street and towards his grand former home - now Warwick House. Over time differences soften, every stone, grand or modest, carries equal weight in telling the story of our community.

Whilst some stones disappear, and others become illegible, our church holds records of more than 11,000 burials - dating from the 14th Century - and almost 2000 burials of ashes. Earlier records are largely names and dates whilst those from the the 19th and early 20th centuries are beautifully recorded in leather-bound books with inscriptions and hand-drawn images of the stones themselves. From the mid 20th century onwards, we have records on computer which makes the information more accessible and certainly more secure.

Headstones hold valuable historic records that are beloved and valued by those who are compiling their own family histories. We frequently receive requests from far and wide for information from the records we hold. The last major

update of our records was carried out more than 25 years ago by Southam WI. Members of the Southam Social Family History group have found burial records a valuable resource when compiling their own family histories. Some members are joining in with a project to update the records and digitise them so that they can be published online (with due respect to GDPR) and searchable from anywhere in the world. The project also includes taking photographs of every stone and making these available too. Southam WI is again helping with this project.

As well as the 'fieldwork', there is also the task of entering the data and uploading it which, happily, can be done from the comfort of an armchair. This project is being sponsored by the 'Our Digital Ancestors' group from 'Caring for God's Acre'. You can find out more about by visiting <https://www.caringforgodsacre.org.uk/our-digital-ancestors/>.

If you would like to become involved with this project, our email address is southamchurchyard@gmail.com or you can call 01926 812413 or text or call 07768 090178. You will be made very welcome and full training will be given!

Southam Social Family History group meets on the second Monday of each month from 1:30 pm to 3 pm in St James Church Office, 74D Coventry Street, Southam CV47 0EA. All are welcome, it's a great way to start building your family tree.

Further information from the church office 01926 812314.

Thursday April 2nd	10am Midweek Holy Communion
Thursday April 2nd	7pm Maundy Thursday Reflection
Good Friday	9:30am Breakfast Church & Children's Activities
Easter Sunday	9:30am Easter Egg Hunt for the Lost Sheep
	10:15am Easter Celebration with Holy Communion
Wednesday April 8th	1-3pm Easter Eco Extravaganza
Sunday April 12th	Easter Praise! 9:45 refreshments, 10:15 service
Sunday April 19th	Morning Worship with Holy Communion. 9:30 refreshments, 10:15 service
Sunday April 19th	3-5pm Spring Afternoon Concert with Dunchurch Band
Thursday April 23rd	1-3pm Footprints Stay & Play Group
Sunday April 26th	Morning Worship. 9:30 refreshments, 10:15 service
Sunday May 3rd	Morning Worship with Holy Communion. 9:30 refreshments, 10:15 service
Thursday May 7th	10am Midweek Holy Communion

Advertise here from only £31.50 per month
REACH OVER 9000 LOCAL HOMES & BUSINESSES!
Call 01926 811911 today for further details or email peter@districtadvertisers.co.uk

WSS Watson selfstorage

HEAD OFFICE:
The Old Coal Yard, Folly Lane,
Napton on the Hill, Southam,
Warwickshire CV47 8NZ

01926 812433 | 07870 953149
Watsonselfstorage@outlook.com

At WSS, we aim to provide you with the **most cost effective** self-storage solutions

- Business and domestic use
- 20ft & 40ft x 8ft containers available
- Full CCTV and security

If you're moving home, renovating or looking to store tools or stock for your business - **get in touch.**

ROOFING

Paul Brookfield

ROOFING

AND

GENERAL BUILDING

Established 20 years

ALL TYPES OF FLAT ROOFING
TILING, SLATING, RE-POINTING

REPAIRS and RE-ROOFS,
FLAT ROOFS REPLACED

FACIAS and GUTTERS REPAIRED or REPLACED
ALL TYPES OF BUILDING WORK UNDERTAKEN
ALL WORK CARRIES INSURANCE WARRANTY
FREE ESTIMATES

 **01327 261728**
07956 114001

Email paul@srsroofing.co.uk
www.superiorroofingsolutions.co.uk

JOIN US FOR 3 HOURS OF CREATIVE FUN AT OUR FRIENDLY VENUE! ☕

YOUR NEW COURSE
ART CLASS

- FUN, EASY LESSONS STEP-BY-STEP
- Learn impressive new skills
- 3 hour sessions, morning or afternoon, for 3½ months
- Get Arty and make new ends at our fun classes!

ABSOLUTE BEGINNERS TO IMPROVERS JUST LIKE YOU!

YOU DESERVE THIS TREAT!

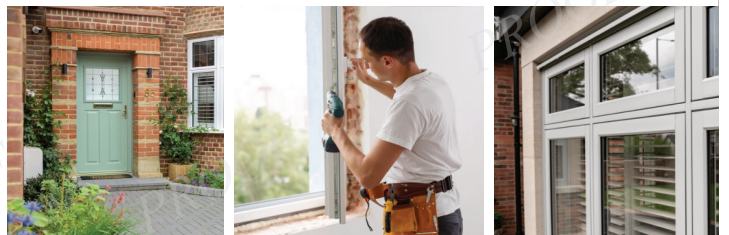
STRICTLY LIMITED PLACES

01926 919315
Southam United Bowling Club

NEW CLASS STARTS SOON

MAKE THE SEASONS YOUR FAVOURITE DAY OF THE WEEK!


Greenlight
WINDOWS & DOORS



Let more light in. Keep the cold out.
Upgrade your home with confidence. Thinking about improving your home this year? Talk to us now for a FREE Quote. Serving Warwickshire and the surrounding areas.

CERTASS
Registered Installer

GQA
Quality Approved

iwa

Solidor

TIMBERLOOK
BY AFFORDABLE WINDOWS



TEL: 01926 930 698 | MOB: 07749 058731
www.greenlightwindows.co.uk

P & B CARPENTRY & BUILDERS

ALL ASPECTS OF
CARPENTRY & BUILDING WORK
New Build Houses - Extensions
Loft Conversions - Garage Alterations

PLANS DRAWN FOR BUILDING REGULATIONS
& PLANNING PERMISSION. FREE QUOTES,
PROFESSIONAL ADVICE, PORTFOLIO AVAILABLE

(T) 01926 612399 (M) 07774 138389
(Email) pandbcarpentry@gmail.com

8 Wilcox Close, Southam, Warks, CV47 2YT



P&B Carpentry & Builders Construction Company

J.P. Collins LLP Builders

Established Family Business for
over 40 years
All aspects of building work
undertaken.



Telephone: **01926 612801**
or
Mobile: **07831 704075**

R & K HOUSE CLEARANCE

Local Friendly Service
Clearing Houses / Flats
/ Attics / Sheds

No Job too Small
Call Rod for a FREE no obligation quote
01295-770808 or 07767-607712
Antiques Bought!

Have Your Windows Steamed Up?

Finance Options Available

Replace just the failed glass unit!

All glazing backed by our

25
YEAR
GUARANTEE

Looking to upgrade your existing windows and doors? UPVC, composite or aluminium.

Contact us NOW!

TRUSTMARK
Government Endorsed Quality

Checka trade

FENSA
APPROVED WINDOW & DOOR INSTALLATIONS



Get a FREE Quote

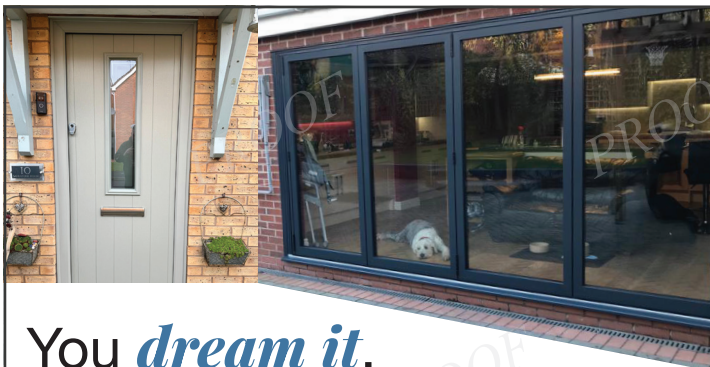
Specialists in timber frames & Amdega conservatory restoration

Faulty locks, handles or hinges?



Priority freephone
0800 61 21 118
www.cloudy2clear.co.uk

Love Your Home - Protect Your Windows - Save Money



You *dream it*,
We *make it* happen

At Southam Windows we can help make your dream home come to life, we listen intently to your requirements then manufacture and install PVCu & Aluminium windows, doors and conservatories that are as individual as you are.

Serving Warwickshire and surrounding areas for over 40 years, we take extreme pride in our windows and doors.

From start to finish, our aim is to ensure you receive a first class service. Our approach is simple and it's based firmly around looking after customers by ensuring you are delighted with everything from initial quote to aftercare.

For a free no obligation quote please
Call **01926 811866**
Email sales@swwarwickshire.co.uk



Southam Windows, Unit C,
Westfield Road, Southam, CV47 0JH

We are Certass registered and offer a 10 year warranty with insurance back guarantee



Tel: **01926 889 691**
Email info@steamingssam.co.uk
www.steamingsam.co.uk

DOMESTIC AND COMMERCIAL HIGH QUALITY CLEANING FOR CLIENTS WHO DEMAND THE BEST



STEAMING SAM specialise in professional cleaning, work is carried out by fully trained, trustworthy technicians and we are insured for your peace of mind.

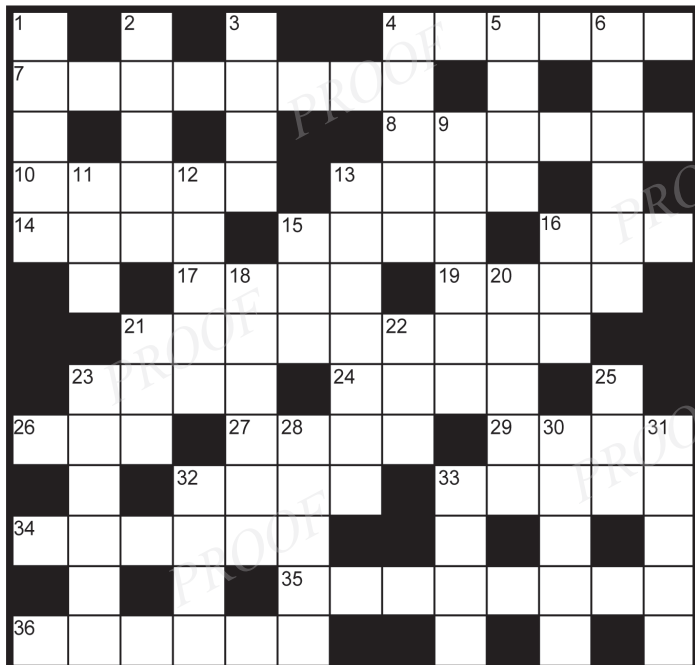
WHAT WE DO:

- deep 'van mounted' carpet cleaning
- stain removal
- fabric protection
- specialist oriental rug cleaning
- hard floor, tile and grout cleaning
- upholstery cleaning
- leather restoration
- end of tenancy cleaning

...and more - call us or check out our website for further information



APRIL CROSSWORD

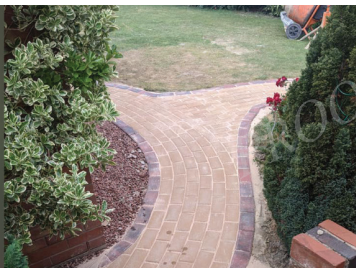


Across

- 4 Exhausts.....(6)
- 7 Day after today.....(8)
- 8 Religious festival.....(6)
- 10 Coin.....(5)
- 13 Long hair.....(4)
- 14 Drawn-out affair.....(4)
- 15 Fairy.....(4)
- 16 Unit of current.....(3)
- 17 African country.....(4)
- 19 Support.....(4)
- 21 Felons.....(9)
- 23 Manner.....(4)
- 24 Chilly.....(4)
- 26 Meadow.....(3)
- 27 Amphibian.....(4)
- 29 Cupid.....(4)
- 32 Duck.....(4)
- 33 Wear away.....(5)
- 34 Wanderers.....(6)
- 35 Believes.....(8)
- 36 Evaluate.....(6)

Down

- 1 Ceases.....(5)
- 2 Amid.....(5)
- 3 Low cart.....(4)
- 4 Curse.....(5)
- 5 Relaxation.....(4)
- 6 Fantasised.....(6)
- 9 Beast.....(6)
- 11 Consume.....(3)
- 12 Mother-of-pearl.....(5)
- 13 Check-up, commonly.....(7)
- 15 Girl's name.....(3)
- 16 Donkey.....(3)
- 18 Suggested.....(6)
- 20 Tree.....(5)
- 21 US Spy organisation.....(3)
- 22 Signal assent.....(3)
- 23 Fruit.....(6)
- 25 Food fish.....(3)
- 28 Desert's fertile patch.....(5)
- 30 Circular.....(5)
- 31 Feeling.....(5)
- 32 Domesticated.....(4)
- 33 Therefore.....(4)



Are you looking to refresh your garden or driveway this year?

AJ Block Paving prides itself on paving the way in quality drives, paths and patios at competitive prices.

We offer a full service, from design, through to installation.

Call now for your free, no obligation quote on

07551 461 733

Or email us at info@ajblockpaving.com



Block Paving • Driveways • Patios
Fencing • Sleepers • Artificial Grass • Landscaping



Random Ramblings

Article By Peter Vale-Humphreys

April

The year seems to be speeding along. Nature has, too, as I witnessed a blackbird collecting vegetation to build a nest – this in mid-February! The Mute Swans at Walton are also swimming about in a determined mood searching out their nest site for 2026. As previously written in an earlier article, they drove off the 2025 year’s cygnets in late January, to make the space in the lake area for the new breeding programme. Nature is truly wonderful and we see the creatures going about what they need to do this year. I really hope that the avian ‘flu does not impact hereabouts.

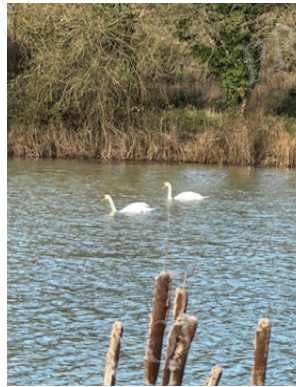
Something which I really do get concerned about is the wanton dumping of rubbish, not so much the fly tipping, although we have witnessed that at times here in Walton and environs, but the discarding of water bottles, empty cans of alcohol, wrappings from food products etc. Really, it must stop as it damages the countryside. It really is thoughtless and inconsiderate. Another of my concerns is for the driving of vehicles over known flowering areas such as cowslips. There is enough roadway edge to do manoeuvres and parking safely, without incursion into the wider verge areas.

Not necessarily connected with our local countryside but more in the towns and certainly the cities is the increasing number of vagrants, rough sleepers, beggars and as recorded in the newspapers, the increase in shoplifting. I always understood that there was a Vagrancy Act (1924) which should address the bulk of the listed situation. Theft is never acceptable and the law really needs to be act; we do need to be stronger in our resolves to address these issues.



To try and introduce a bit of positiveness and wellbeing aspects, my recent visit to the Capital and the Kew Gardens yielded such wonders as hosts of daffodils, crocus, snowdrops, even a fox which was oblivious to our presence. My brother-in-law, Andrew, took a wonderful picture of the fox. Walking the streets, as we travelled to our next meal celebration for the Chinese New Year, it was obvious that nature exists with us. As the senior member there are responsibilities to undertake, but it has been a happy time of celebration, even the greeting of our latest family member Caerys a little angel born at end of January and in time for the CNY festivities. The proud parents, Sally and Marek, were keen to let us join in and bestow our good wishes to the little infant girl. It goes to underpin the importance of family and getting together to support each other in our daily lives. In the UK, isolation is all to prevalent and we all could do more to look out for one another, without being too overbearing or intrusive.

With Spring truly here, along with the rain that seems endless, we should feel the need to get out and breathe the air and make our observations on nature doing its bit to brighten our livers.



Please enjoy the nature photos taken by Andrew and Edith –really stunning.

Apply to join our delivery team by visiting the below website:
www.districtadvertisers.co.uk/join

Plumbing & Heating Leamington Spa

12 Highcroft Crescent, Royal Leamington Spa
**Ex-British Gas trained
engineer with over 15 years experience!**

- 7 day service
- Gas appliance servicing and repair
- Central heating system maintenance
- Small plumbing jobs
- Landlords safety certificates

Please call
Richard Adams
Tel: 07305
820920

Email: info@plumbingandheatingleamingtonspa.co.uk
Web: www.plumbingandheatingleamingtonspa.co.uk



W Goodwin & Sons



FOR ALL YOUR DIY NEEDS

Plumbing, Quality Timber, Coal, Fencing, Electrical Fittings, Plywood, Paint, Cement, Sand, Gardening Products, Glass.

COMPETITIVE PRICES!

Household and Giftware, Kitchenware, Fireside Accessories, Hoover Bags. Huge stockline of goods available when pre-ordered inc. Log Burners, Vacuum Cleaners, Garden Furniture, BBQ's etc

38, Coventry Street, Southam Tel: (01926) 812445



Pet's Corner

Adventures with Your Pets

April is a lovely time of year for both pets and their owners. The days are becoming longer, the weather is beginning to improve, and gardens, parks and countryside walks are bursting back into life. After the colder winter months, many of our pets are ready to enjoy more fresh air, exercise and stimulation.

For dogs, April is a wonderful month for getting back into regular outdoor routines. Walks become more pleasant, fields and footpaths are greener, and there are more opportunities for play and exploration. However, with spring comes muddy paws, wet coats and plenty of interesting smells, so it is a good idea to keep a towel by the door and check paws after walks.

Cats also tend to become more active at this time of year. Many enjoy sitting in sunny spots, exploring the garden and making the most of the milder temperatures. If your cat spends time outdoors, April is a good reminder to ensure their microchip details are up to date and that they are protected against fleas and worms, as parasites begin to become more active in warmer weather.

Spring is also an important time to think about pet health. Fleas, ticks and other pests start to reappear in April, so prevention is always better than cure. Regular grooming can help you spot any problems early, and it is a good chance to check your pet's coat, skin, eyes and ears. For long-haired pets in particular, a spring groom can make them feel much more comfortable.



Many pet owners also like to spend more time in the garden during April, and pets often join in. But care should be taken with spring flowers and plants, as some can be harmful if chewed. Tulips, daffodils and lilies can all pose risks to pets, especially cats. It is worth checking that your garden is a safe place for curious noses and paws.

April can also be a lively month for wildlife, with birds nesting and small animals becoming more visible. Dog owners should be mindful when walking in the countryside and keep dogs under control around livestock and wildlife. Cat owners may also notice their pets becoming more interested in birds and hidden corners of the garden.

For smaller pets such as rabbits and guinea pigs, April is a welcome change too. As temperatures rise, outdoor hutches and runs can start to be used more often, provided nights are not too cold. Fresh greens can be introduced carefully, and enclosures should be checked to ensure they remain dry, secure and sheltered from April showers.

Most of all, April is a month to enjoy the companionship that pets bring. Whether it is a cheerful walk with the dog, watching your cat bask in a patch of sunlight, or seeing a rabbit happily nibble fresh hay, spring offers many simple pleasures. Our pets often remind us to slow down, get outside and enjoy the changing season.

So as April unfolds, make the most of the brighter days, stay on top of seasonal pet care, and enjoy all the little moments with your furry friends.

YOUR LOCAL ELECTRICIAN



- Outdoor lighting
- Fuseboard Upgrades
- Fault finding and Repairs
- Solar and Battery Storage
- Wireless and Remote Switching Solutions
- EV Charger Installations
- Additional lights/Sockets



✉ info@intolec.co.uk www.intolec.co.uk

☎ 01926 768080

Advertise here from only £31.50 per month

REACH OVER 9000 LOCAL HOMES & BUSINESSES!

Call 01926 811911 today for further details or email peter@districtadvertisers.co.uk



*Travel your way, stress-free
- contact me today and let's start
planning your next holiday!*

Katie Clarke

TRAVEL COUNSELLOR

01926 291340

katie.clarke@travelcounsellors.com
travelcounsellors.com/katie.clarke



Why Advertise with Us!

In today's rapidly evolving marketing landscape, local businesses face the critical decision of choosing the most effective advertising channels to reach their target audience. While digital platforms like social media and search engine advertising have gained prominence, print advertising remains a potent and advantageous medium for local enterprises. This article explores the compelling reasons why local businesses should prioritize print advertising, supported by relevant statistics and sources.

Localized Reach and Tangible Presence

Print advertising offers a unique advantage in its ability to target specific geographic areas, ensuring that marketing efforts reach the intended local audience. Publications such as District Advertisers, with a total print run of over 15,000 copies and a potential reach of 30,000 readers, provide an effective platform for businesses to connect with community members. The physical nature of print media creates a tangible presence, making advertisements more memorable and engaging for readers. Research indicates that people are more likely to remember an ad they've seen in print compared to one they've scrolled past online. www.comobusinesstimes.com

Extended Shelf Life

Unlike digital ads that can be fleeting, print advertisements have a prolonged lifespan. Publications like District Advertisers are often retained by readers until the following month's issue, providing continuous exposure for the advertised businesses. This extended shelf life increases the likelihood of repeated views, reinforcing brand recognition and recall.

Economic and Environmental Benefits of Supporting Local Businesses

Advertising in local print media not only promotes individual businesses but also fosters economic growth within the community. Studies show that for every pound spent at a local business, approximately 67p stay within the community, compared to about 43p when spent at a chain store. www.revfcu.com This recirculation of funds supports local employment and contributes to the overall economic health of the area.

Moreover, encouraging consumers to patronize local businesses reduces the need for long-distance travel, leading to decreased fuel consumption and lower carbon emissions. This eco-friendly choice aligns with growing consumer preferences for sustainable practices and enhances the community's environmental well-being.

Complementary Role of Digital and Print Advertising

While digital advertising offers benefits such as precise targeting and real-time analytics, combining it with print advertising can amplify overall marketing effectiveness. Studies have found that integrating print and digital ads can make online campaigns 400% more effective. www.manypixels.co This synergy allows businesses to leverage the strengths of both mediums, creating a comprehensive strategy that maximizes reach and engagement.

Conclusion

For local businesses aiming to establish a strong presence within their communities, print advertising presents a reliable and impactful medium. With its localized reach, extended exposure, and support for economic and environmental sustainability, print media remains a valuable tool in the marketing arsenal. By thoughtfully integrating print with digital strategies, businesses can enhance their visibility and foster lasting connections with their target audience.

For more information please call 01926 811911 or email: peter@districtadvertisers.co.uk or Issue deadline is the 16th of the month.

Advertise here from only
£127.58 per month

**REACH 8000+ LOCAL
HOMES & BUSINESSES!**

Call 01926 811911 today for further details
or email peter@districtadvertisers.co.uk

Book Online at

Advertise here
from only
£70.88 p/m

**SMALLER AND
LARGER ADVERT
SIZES ARE
AVAILABLE
RIGHT UP TO
A HALF AND**

How to Play Sudoku

Sudoku is a nine by nine grid divided into nine smaller boxes. Your task is to place the numbers one to nine so that every row, column and box contains each number exactly once. No number may be repeated within any of these areas.

Begin by studying the numbers already given. Look for rows, columns or boxes that are nearly complete, as it is easier to identify which numbers are missing. Count how many spaces are left and compare them with the numbers already used.

Use elimination to narrow down choices. If a number already appears in a row, column or box, it cannot be placed in any other square within that area. This process helps reduce uncertainty and reveals logical placements without guessing.

When only one space can hold a particular number, fill it in and move on. Each correct entry creates new opportunities elsewhere in the grid. Keep scanning the puzzle, switching between rows, columns and boxes to spot patterns and resolve tighter sections.

Sudoku is solved through logic rather than speed. Work methodically, remain patient, and revisit difficult areas after making progress in other parts of the grid. With practice, recognising patterns becomes easier, and completing the puzzle becomes both satisfying and rewarding.

S U D O K U

4	9	5	6	1	7		2	
8	6	3			9	4	1	7
7	1	2		3	8		5	
	8	7		6	2			
	4			9		5		
					4	2		
3						1	8	
9	5		2		1			6
				8			9	5

KEEP READING

FOR ANSWERS

accent lighting

Quality Lighting

Probably the biggest and best in the Midlands
Choose from thousands of products

- Large range of outdoor lighting in store now
- Expert advice always available.

Open 6 days a week
Mon-Fri 9.30am - 6pm & Sat 9.30 - 5pm
Sunday and evenings by appointment
Free parking

Come and visit our showroom...
Unit 10 Station Close Trade Park,
Vicar Lane, Daventry, Northants, NN11 4FJ
Tel: 01327 703123
* Price Matching T&C's Apply



Wellesbourne & District Lions

This year we have 6 Giant Easter Eggs, made specially for the Wellesbourne & District Lions by Thorntons. For a chance to win one of these lovely eggs there are six separate raffles across the Wellesbourne and District area.

Lions will be selling tickets at Wellesbourne Sainsbury's on Good Friday 3rd April and at Ettington Shop on Easter Saturday 4th April from 10am until 2pm on both days. The winning ticket on each day will win a Giant Easter egg delivered to their door in time for Easter Day.

We also have a further four Giant Eggs situated at: Gilks Café Kineton, The Granville Pub and Village shop in Barford and Massimo barbers in Wellesbourne. Eggs and tickets will be available in each of those venues from early March until Easter.

All funds raised will help our local communities.

"Tipper" who is our barman at Lions Club meetings, is seen here admiring one of the special Easter Eggs. (Thanks for all you do for the club Tipper!)



JOIN US FOR 3 HOURS OF CREATIVE FUN AT OUR FRIENDLY VENUE!

YOUR NEW COURSE
ART CLASS

- FUN, EASY LESSONS STEP-BY-STEP
- Learn impressive new skills
- 3 hour sessions, morning or afternoon, for 3½ months
- Get Arty and make new ends at our fun classes!

ABSOLUTE BEGINNERS TO IMPROVERS JUST LIKE YOU

YOU DESERVE THIS TREAT

STRICTLY LIMITED PLACES

01926 919315
Southam United Bowling Club

NEW CLASS STARTS SOON

MAKE THE SEASONS YOUR FAVOURITE DAY OF THE WEEK!



Business Cards • Brochures
Leaflets & Flyers • Promotional Merchandise etc....

Call: 01926 811911 | Email: peter@starre.co.uk

April in British History

April has long been a month linked with important moments in the history of the United Kingdom. From famous battles and royal birthdays to political change and national tragedy, the month has produced events that continue to shape how Britain remembers its past. Some April anniversaries are marked with celebration, while others are remembered with reflection and sadness. Together, they help tell the story of a nation shaped by conflict, culture, courage and change.



One of the most significant April events in British history is the **Battle of Culloden**, fought on **16 April 1746** near Inverness in Scotland. This battle brought the Jacobite Rising to a decisive end, as the forces of Charles Edward Stuart, better known as Bonnie Prince Charlie, were defeated by the Duke of Cumberland's government army. Culloden is remembered not only as the last major battle fought on British soil, but also for the harsh consequences that followed. Highland culture, dress and traditions were heavily suppressed in the years afterwards, making Culloden a deeply important and emotional chapter in Scottish history.



Another famous April date is **23 April**, traditionally celebrated as both the birth and death date of **William Shakespeare**. Born in **1564** and dying in **1616**, Shakespeare remains one of the greatest writers in the English language and one of Britain's most famous cultural figures. His plays, poems and characters continue to be performed and studied around the world, making April an important month in literary history as well.

April also carries a strong connection to one of the world's most famous maritime disasters. On **15 April 1912**, the **Titanic** sank on its maiden voyage after hitting an iceberg in the North Atlantic. Although the tragedy happened far from Britain, the ship was built in **Belfast**, and its story remains closely tied to British and Irish industrial history. The sinking shocked the world and became a lasting symbol of both human ambition and human vulnerability.

In **April 1916**, the **Easter Rising** began in Dublin. Although this event took place in Ireland, it formed a major part of the wider history of the United Kingdom, as Ireland was then under British rule. What began as an armed rebellion soon became a turning point in the struggle for Irish independence. The events of that April would go on to reshape relations between Britain and Ireland for generations.

Modern British history also contains April events that remain vivid in living memory. On **15 April 1989**, the **Hillsborough disaster** took place during an FA Cup semi-final in Sheffield. Ninety-six Liverpool supporters lost their lives as a result of a crush in the stadium, with later victims bringing the total to ninety-seven. It was one of the darkest days in British sporting history, and the long campaign for justice that followed became just as important as the tragedy itself. Hillsborough remains a powerful reminder of the need for truth, accountability and dignity for victims and their families.

A more hopeful April anniversary came on **10 April 1998**, when the **Good Friday Agreement** was signed. This landmark agreement helped bring an end to much of the violence known as The Troubles in Northern Ireland. It was a major political achievement and remains one of the most important peace agreements in modern British and Irish history. For many people, it stands as proof that dialogue and compromise can achieve what years of conflict could not.



April is also a notable month for the Royal Family. **Queen Elizabeth II** was born on **21 April 1926**, and throughout her long reign that date became a significant one in the national calendar. Her life spanned an extraordinary period of British history, and April was always a month of royal reflection and celebration.

Taken together, these events show that April is far more than just the arrival of spring. It is a month filled with anniversaries that reveal the drama, sorrow, achievement and resilience of British history. From battlefields to peace agreements, from literary greatness to national mourning, April has given the United Kingdom many moments that remain memorable to this day.





Digital Coins – Scam or Investment?

Digital coins, often called cryptocurrencies, have become one of the most talked-about financial topics of modern times. Some people see them as the future of money, while others believe they are little more than a risky gamble. So, are digital coins a scam or an investment? The truth is that they can be either, depending on the coin, the platform, and the knowledge of the person buying them.

At their best, digital coins are a new form of financial technology. They allow people to send and receive value online without always needing a traditional bank. Well-known coins such as Bitcoin and Ethereum have gained popularity because they are widely recognised and built on established blockchain systems. Supporters argue that these coins may offer long-term investment potential, especially as more businesses, institutions, and investors show interest in them.

However, the digital coin world is also full of danger. Thousands of coins have been launched with little or no real purpose behind them. Some are created purely to attract quick money from hopeful investors before collapsing in value. In some cases, developers disappear with investors' funds, leaving buyers with worthless digital tokens. This is where the word "scam" becomes very real. Fraudsters often use hype, celebrity endorsements, social media excitement, and promises of guaranteed returns to tempt people into parting with their money.

CROSSWORD ANSWERS

H	C	P	S	K	E
P	U	L	L	E	Y
M	O	T	A	L	R
O	B	E	Y	H	E
L		O	P		K
H	Y	P	H	E	N
E					A
T	W	I	N	G	E
H		M	A		F
K	E	R	B	P	U
R	O	I	L	A	O
D	R	A	W	E	R
Y	L	E	S	E	T

Unlike traditional savings or many regulated investments, digital coins can be extremely volatile. A coin may rise sharply one week and crash the next. That means even a genuine cryptocurrency is not automatically a safe investment. Many people have made profits, but many others have lost large sums by buying at the wrong time or trusting the wrong project.

In my view, digital coins are not all scams, but they are not a safe investment for everyone either. The strongest and most established cryptocurrencies may be considered a speculative investment, but the market as a whole is filled with risk, misinformation, and fraud. Anyone entering this area should only invest money they can afford to lose, research carefully, and stay away from anything that sounds too good to be true.

So, are digital coins a scam or an investment? The answer is that they can be a legitimate investment in some cases, but they are also a playground for scams. Caution, research, and common sense are essential. For most ordinary people, digital coins should be approached with care rather than excitement.



STARRE

DESIGN & PRINT

For all your **PRINTING NEEDS!**

Leaflets & Flyers



Call Now: 01926 811911

Email: peter@starre.co.uk



A NEW WAY TO SELL

Delivering exceptional service and results

0333 444 1066

HARRY@HRESTATEAGENTS.CO

VISIT THE BEAUTIFUL EAST DEVON JURASSIC COAST



Stay in a beautiful 3 Bed restoration in the centre of the historic town of Axminster. Ideally situated to use as a base to explore the World Heritage Jurassic Coast line and beautiful countryside

- Central Axminster location with parking
- 3 bedrooms, sleeps 6 people
- 10 minutes from Lyme Regis
- Pet friendly



Call Peter: 07779722951
Email: pcosby@dasurf.net
www.starrecottages.co.uk

FROM £350 FOR
A 3 NIGHT STAY

TOM RODGERS Tree Services

Free
No Obligation
Quote

Fully Qualified & Insured

- › Professional Tree Care
- › All aspects of tree work
- › Stump Grinding
- › Hedge Trimming

Est. 2003 | Member Arboricultural Association

07958 794180
01926 710383

tom@tomrogers.co.uk
www.tomrogers.co.uk



New Delivery People Wanted

All Ages Welcome!

Get some exercise whilst earning a bit extra.

The District Advertiser
join our waiting list:
www.districtadvertisers.co.uk/join